



Revolution
Taxidermy Supply



2022 CATALOG

1-877-738-3676

www.revolutiontaxidermysupply.com

INDEX

INDEX	2	THE PACKMOUNT (DEER)	38
WELCOME/INTRODUCTION	3	TROPHY N' STRIDE WALL PEDESTALS.....	41
TECHNO HEAD OPTIONS.....	4	HUNTER'S 1/2 MOUNT.....	43
ULTIMATE PRO EAR BUTTS	7	TECH TIPS/INFORMATION	45
WALL PEDESTAL LAST CHANCE	8	ACCUFAST EYES.....	50
"DON'T TREAD ON ME" WALL PEDESTAL	11	SYMMETRY SET ROUND EYES.....	51
JACK EMERY.....	12	CLIFF BEAR.....	54
HIDE & SEEK.....	13	HALF WALKING BEAR	55
NATURAL SHOULDER WALL PEDESTAL	14	LIFESIZE WALKING BEAR	59
CURIOUS ALERT	15	RELAXED WALKING BEAR	60
HIGH ALERT.....	17	"CAUGHT YA" BEAR.....	61
RELAXED SWEEP	18	STANDING TOUGH BEAR.....	61
SEMI-SNEAK OFFSET	20	LAYING DOWN ALERT BEAR	61
SEMI-UPRIGHT OFFSET	22	45/90 BEAR.....	62
THE EVOLUTION	24	WALL PEDESTAL BEAR	62
THE BUSTED	26	SPY BEAR	63
FULL SNEAKS.....	28	LAST CHANCE SHOULDER BEAR	63
SNEAK SWEEP	30	CHARGING BEAR.....	63
STANDARD LEG TABLE PEDESTAL	32	BUCKEYE BEAR EARLINERS/TOHICKON EYES	63
PRO-LINE.....	34	THE PACKMOUNT (BEAR)	64
TECHNO HEAD/FACE OPTIONS.....	37		

© Copyright 2022 - This catalog and all forms in this catalog are copy-righted. Any copying of these forms or any part of a form is strictly prohibited.

**Now
order
online!!**

www.revolutiontaxidermysupply.com



1910 Saint Luke Church Rd.
Salisbury, NC 28146

www.revolutiontaxidermysupply.com

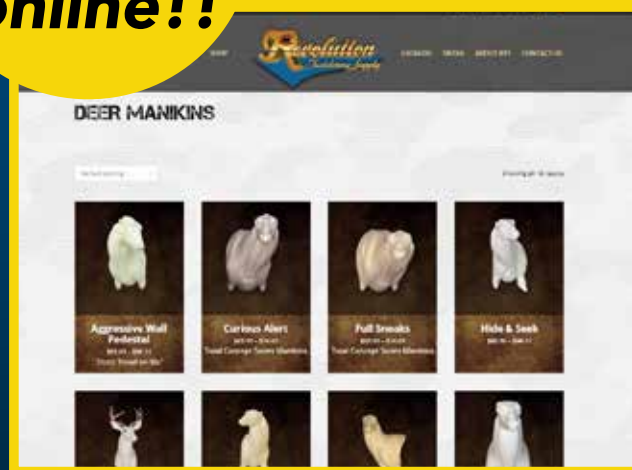
Email orders and communications to:
RTS@mckenzietaxidermy.com

1-877-738-3676 | **1-800-279-7985**

To Place Order Toll Free | Technical Questions
8AM - 8PM | 8AM - 5:30PM





Hunters are becoming more and more demanding about what they want from their taxidermists. Some think the head's too narrow, some think the head's too fat, some think it should have more of a roman nose, some think it should have a dewlap on its lower jawline. In addition to different lines of truly unique poses, Revolution forms give you the option of choosing your own head configuration depending on the geographical region many of your deer come from; Revolution offers solutions to your personal likes and features that can make the mounting process easier. These choices include slim faces, broader northern faces, deep jawlines, roman noses, dewlaps, pre-sculpted ear butts and more! We call this series of available solutions the Custom Techno Head Options. These options are listed in our sizing charts featured throughout our catalog under their own heading, "Custom Techno Head Options".

A few words about Techno Head Options

Different regions will have traits in deer that can be counted on to be prevalent locally. Our "A variant" will generally be slender faced with a small muzzle. With an eye-to-nose measurement of $6\frac{7}{8}$ ", this would be a typical Southern deer. An older Southern deer, with a "next size up" nose, muzzle and eye width would be characterized as a "B variant" with an eye-to-nose measurement of 7". Rounding out the Southern deer strain is our "C variant" which has all the characteristics of the "A", but is longer in the face at $7\frac{1}{4}$ ".

The "E variant" is a good starting place for our Northern deer. This 7" deer has a deep face, slightly wider eye width, with a very large nose and muzzle. The "E variant" will be a good solution to accommodate an older deer with a deep dished forehead and double dewlaps.

Revolution's "I variant" is the standard head our $7\frac{1}{2}$ " x (19-23") forms are produced with when no Custom Techno Head Options are ordered. This deer would be characterized as more of a Northern deer with a wider, fuller face than what a Southern deer would have. Our "J variant" is the standard head our $7\frac{1}{2}$ " x (21-22") forms are produced with when no Custom Techno Head Options are ordered. This Northern deer's face is normal in width and depth.

Our "N variant" is similar to the J in most aspects, including the $7\frac{1}{2}$ " eye to nose measurement, though the lower jaw has been deepened. This takes up excess skin from a mature deer, plus a lot of folks just prefer the look it imparts on a mount. Also $7\frac{1}{2}$ " nose to eye, the "F variant" has a broader face and is more Northern looking. It has a triangulated frontal forehead typical of the hair pattern of a mature long-haired deer. Its rear lip has a slightly more acute kick up at the end. It has dewlaps that deepen the look of the lower jaw even though the lower jaw is of normal depth.

The beauty of our Techno Head/Face Option System is the variety of choices that you have. Discerning hunters are always looking to have "their" deer stand out. If they see that their deer can be "customized", you will get their business.



**Aggressive
Wall Pedestal**

The Evolution

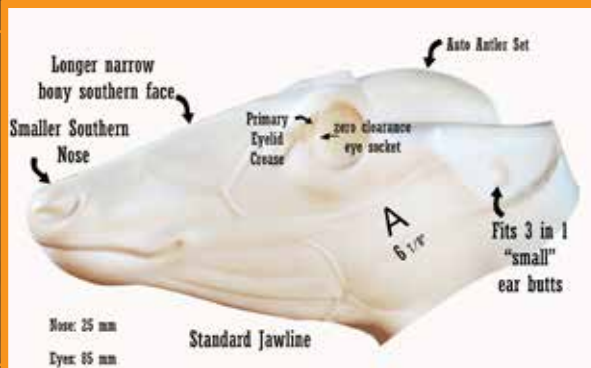
Hide and Seek

**The
Busted**

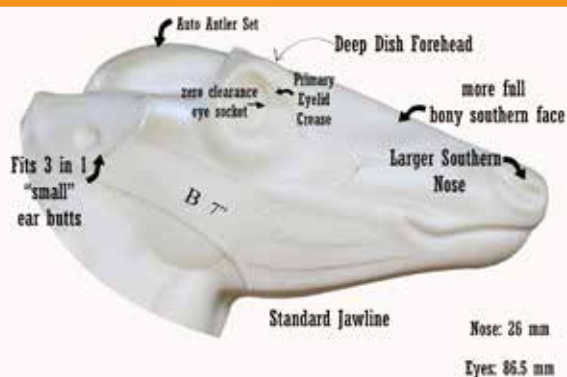
Mule Deer

Techno Head Options A-H

A = Southern Petite (6 7/8")



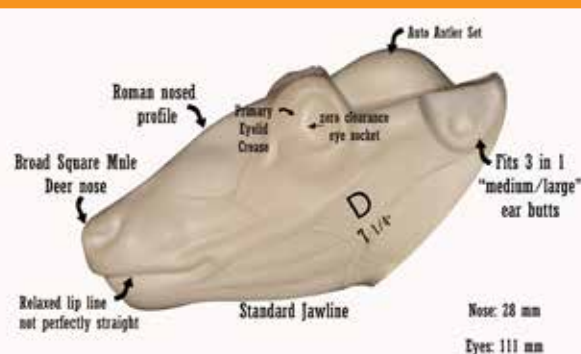
B = Southern (7")



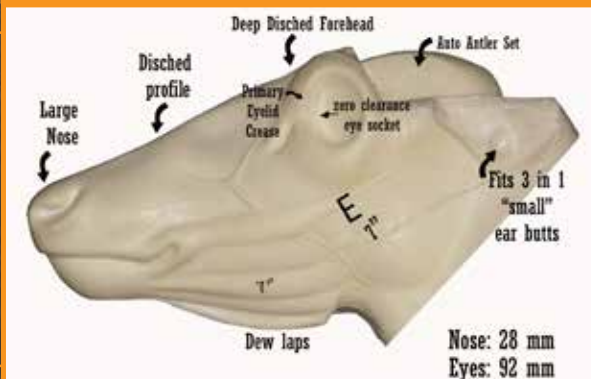
C = Southern Petite (7 1/4")



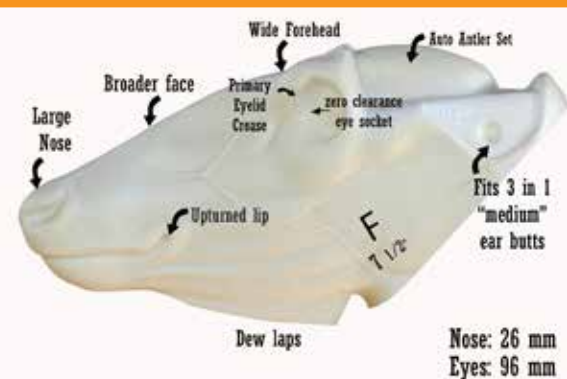
D = Mule Deer - Roman Nosed (7 1/4")



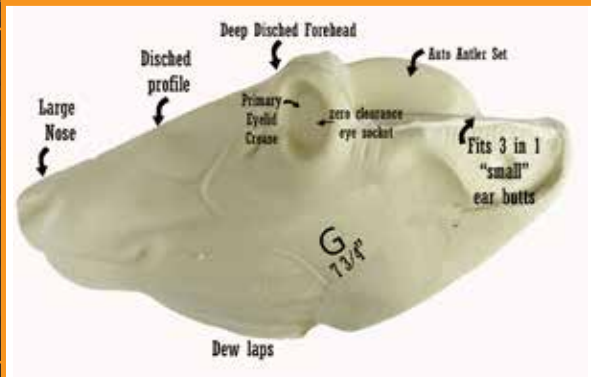
E = Northern Mature - Double Dewlaps - Dished Forehead (7")



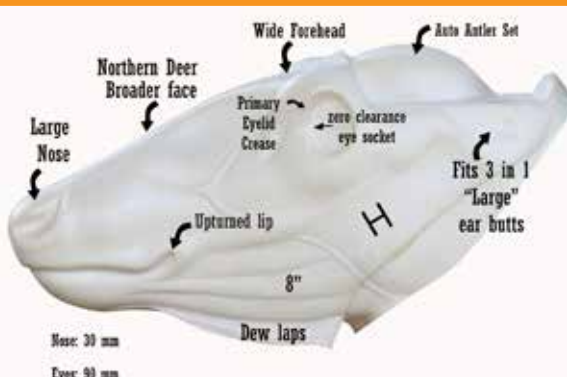
F = Northern Mature - Double Dewlaps (7 1/2")



G = Northern Mature-Broader Face-Double Dewlaps-Dished Forehead (7 3/4")



H = Broader Faced Head - Double Dewlaps (8")



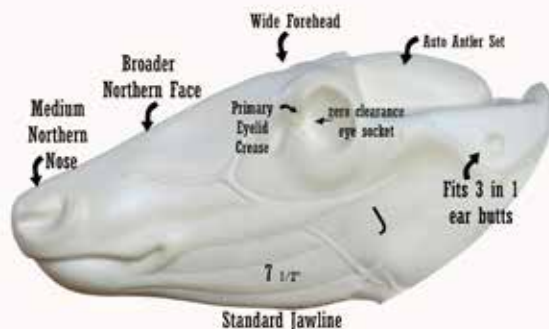
Techno Head Options I-P

I = Standard Head - Northern - (7 1/4")

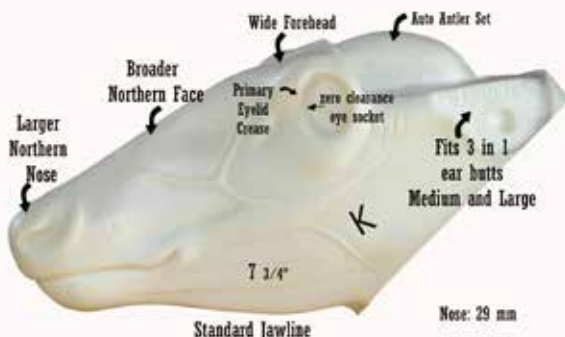


Nose: 24 mm
Eyes: 90 mm

J = Standard Head - comes on the form unless another head option is available or chosen (7 1/2")

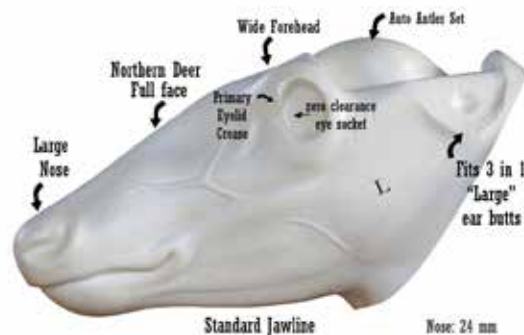


K = Standard Head - Northern (7 3/4")



Nose: 29 mm
Eyes: 98mm

L = Standard Head - Northern (8")

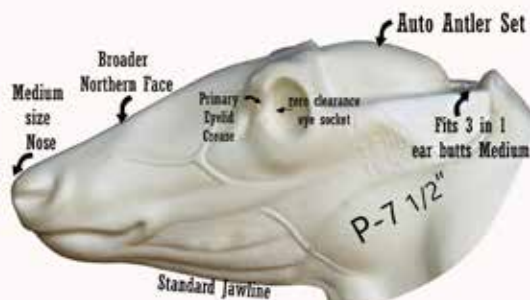


Nose: 24 mm
Eyes: 96 mm

N = Standard Head with Deeper Jaw (7 1/2")



P = Hybrid - Fits most 23" Necks (7 1/2")



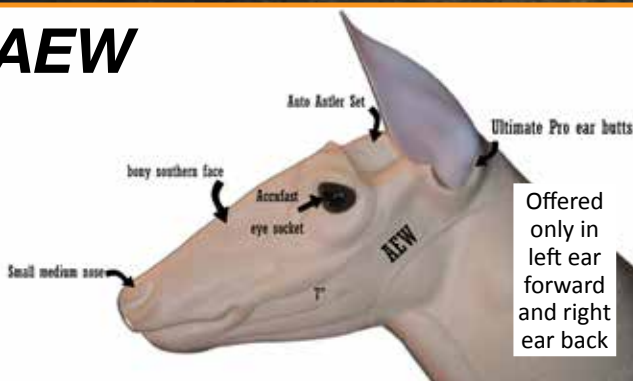
This head fits on most 23" total concept mannikins. Some sanding is required to transition between neck and head.



Techno Head Option with Ear Butts MEA (Montana)

Accufast Ultimate Pro Ear Butts

AEW

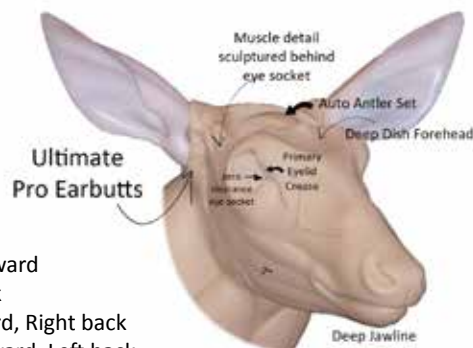


Offered only in left ear forward and right ear back

Round Eye Socket Ultimate Pro Ear Butts

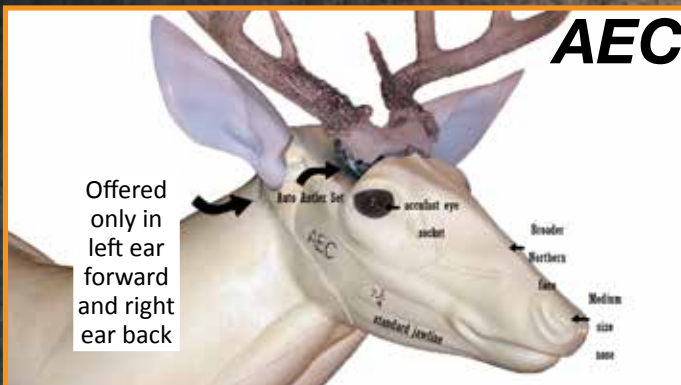
7"

DIFFERENT
EAR BUTT OP-
TIONS AVAIL-
ABLE WITH
THIS HEAD



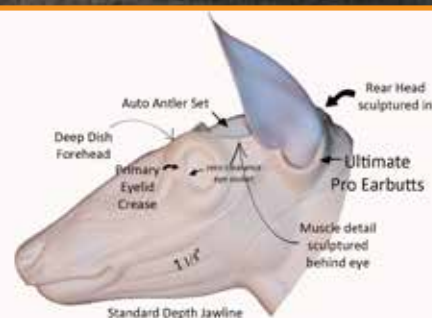
EU= both ears Forward
EV= both ears Back
EX= Left ear forward, Right back
EW= Right ear forward, Left back

AEC



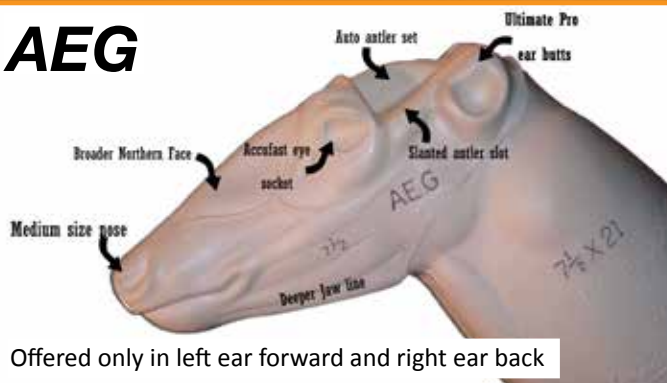
7 1/4"

DIFFERENT EAR
BUTT OPTIONS
AVAILABLE WITH
THIS HEAD



EA= both ears Forward
EB= both ears Back
EC= Left ear forward, Right back
ED= Right ear forward, Left back

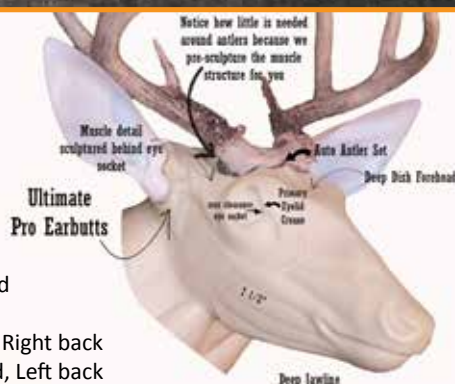
AEG



Offered only in left ear forward and right ear back

7 1/2"

DIFFERENT
EAR BUTT
OPTIONS
AVAILABLE
WITH THIS
HEAD



EE=Both ears Forward
EF=Both ears Back
EG=Left ear forward, Right back
EH=Right ear forward, Left back

AEK



Accufast heads with Ultimate Pro ear butts offered in only left ear forward & Right ear

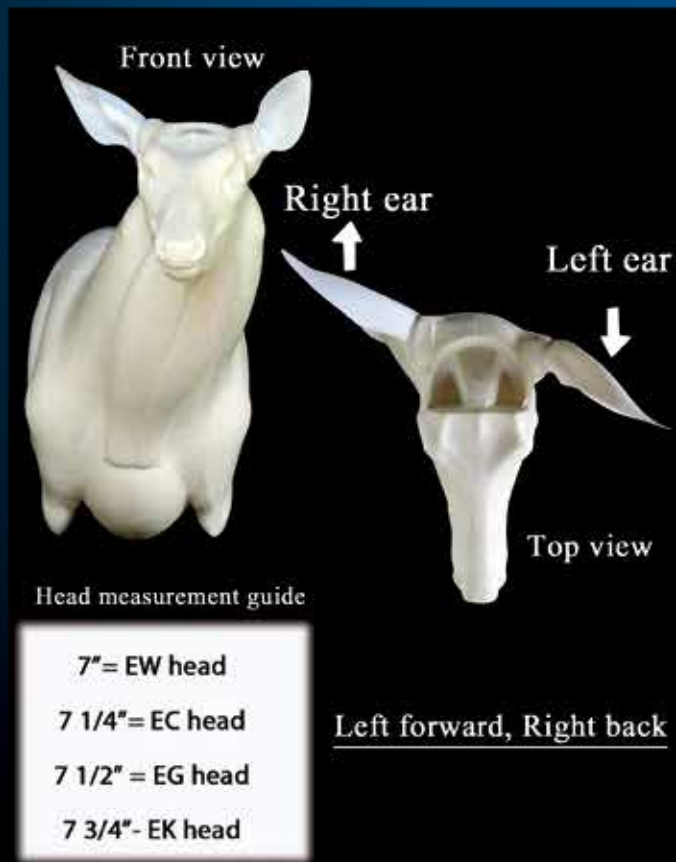
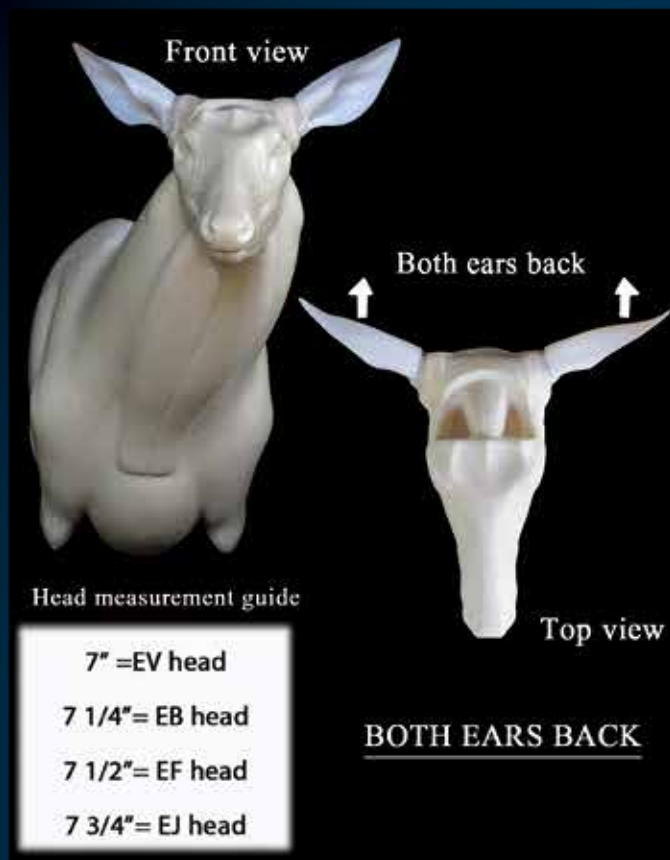
7 3/4"

DIFFERENT
EAR BUTT
OPTIONS
AVAILABLE
WITH THIS
HEAD



EI= both ears Forward
EJ= both ears Back
EK= Left ear forward, Right back
EL= Right ear forward, Left back

Ultimate Pro Ear Butts POSITIONS



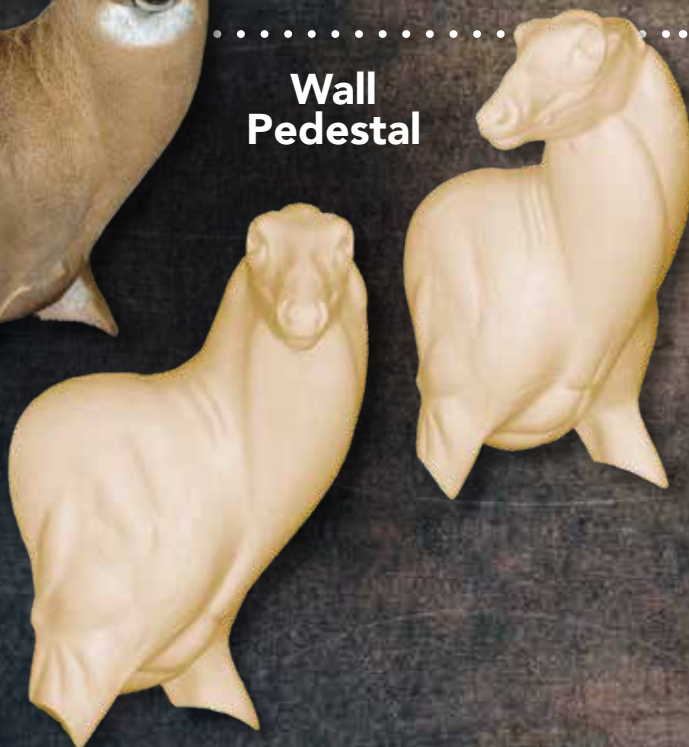
Wall Pedestal Last Chance

& Rubbing Buck/Threatening

We turned our famous Last Chance into a wall pedestal! By custom hanging this mannikin at a bi-angle position, you can turn him into a Rubbing or Aggressive mount, which creates custom artistry. This will surely be the centerpiece of your Whitetail display room, which will make you stand above the competition.



**Wall
Pedestal**



**Rubbing
Buck**

FOLLOW THESE EASY STEPS WHEN PLACING YOUR ORDER:

Step 1: Choose the size form you need (for example: 1691).

Step 2: Choose the head you want, without or with ear butts (for example: 1691-AEC)

Step 3: Order the form (for example: 1691-AEC)

Partial Form Number	A	B	C	D	Turn	Custom Techno Head Option (suffix)	Price without Ear Butts	Custom Techno Head Option with Ear Butts (suffix)	Price with Ear Butts
1691	7 1/4	19	18	22 1/2	RT	A, B, C, E, I	88.47	EU, EV, EW, EX, EA, EB, EC, ED, AEC, AEW	96.22
1727-TC	7 1/2	21	19	24 1/2	RT	Total Concept	90.48	N/A	---
1750	7 3/4	23	20 3/4	27 1/4	RT	G, K, D, P	92.06	EI, EJ, EK, EL, AEK	99.81
1747-TC	7 3/4	25	22 1/2	29 1/2	RT	Total Concept	95.39	N/A	---

NOTE: Head Types

3-N-1 Ear Butts see page 48

TOTAL CONCEPT: 3-N-1 Ear Butt, Zero Clearance Eye Socket, Auto Antler, Nose Cleft

Use round eyes for this series - see page 51

A = 6 1/2 - 6 3/4" use 30mm eyes

A = 7 - 8 1/4" use 32mm eyes

Last Chance

.....
"I mounted the largest typical
archery whitetail in North Ameri-
ca (208 7/8 gross 190 6/8 net) in
2007 in your Last Chance, looks
great! Thanks!"

.....
— Jim Hunsaker, IL.
.....



2B-TC
7 3/4 x 23



21A-TC
7 3/4 x 25



Mounted by :
Don Stevens
State, National,
International and World Champion

2003 Tennessee Taxidermy
Association Competition

1. Masters Division
2. Judges' Choice: Best in Show
3. People's Choice: Best in Show
4. WASCO Award

Mount shown has been
altered to an open mouth
1D-TC
7 x 22



1D-TC
7 x 22





Total Concept Series Mannikins

Last Chance Right Turn

Use Accufast eyes for this series - see page 50

A = 6 1/2 - 6 3/4" use 30mm eyes

A = 7 - 8 1/4" use 32mm eyes

Form Number	A	B	C	D	Turn	Price
1A-TC	7	17	16	18 1/2	RT	79.39
1B-TC	7	19	17 3/8	20 3/4	RT	83.31
1C-TC	7	21	18 1/2	23	RT	85.88
1D-TC	7	22	19	24 1/2	RT	86.61
1E-TC	7 1/4	18 1/2	17 1/2	20 1/4	RT	82.13
1F-TC	7 1/2	20	18 7/8	22	RT	84.42
2A-TC	7 3/4	20 1/2	19	23 1/4	RT	84.87
2B-TC	7 3/4	23	20 3/4	25 1/2	RT	87.60
21A-TC	7 3/4	25	22	29 1/2	RT	88.64

Last Chance Semi-Sneak

Form Number	A	B	C	D	Turn	Price
2C-TC	7	19	18 1/2	21	RT	83.31
2D-TC	7	21	19	24	RT	85.88
2E-TC	7	22	20	25 1/2	RT	86.61
2F-TC	7 1/2	20	18 1/2	23	RT	84.29
3A-TC	7 3/4	21	19 3/4	23	RT	85.88
3B-TC	7 3/4	23	20 3/4	25 1/2	RT	87.60

Last Chance Left Turn

FOLLOW THESE EASY STEPS WHEN PLACING YOUR ORDER:

Step 1: Choose the size form you need (for example: 3C).

Step 2: Choose the head you want, without or with ear butts (for example: 3C-AEC)

Step 3: Order the form (for example: 3C-AEC)

Partial Form Number	A	B	C	D	Turn	Custom Techno Head Options (suffix)	Price w/Ear Butts	Custom Techno Head Options with Ear Butts (suffix)	Price with Ear Butts
3C	7 1/4	19	18	24 1/4	LT	A, B, C, E, I	85.12	EU, EV, EW, EX, EA, EB, ED, AEC, AEW	92.87
3E	7 3/4	23	21 1/4	27 1/4	LT	D, G	90.17	EI, EJ, EK, EL, AEK	97.92

TOTAL CONCEPT Series Mannikins - Last Chance

Custom Techno Head options page 4-6

Use round eyes for this series - see page 51

A = 6 1/2 - 6 3/4" use 30mm eyes

A = 7 - 8 1/4" use 32mm eyes

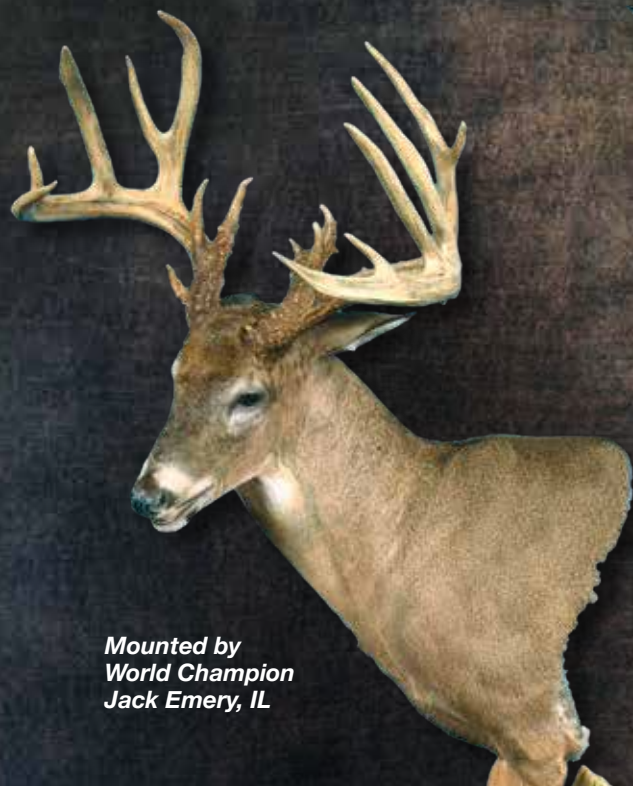
One Last Chance with Sym-Set Eye Socket

Form Number	A	B	Turn	Price
1S	6 3/4	16	RT	78.77

Use 30mm round eyes for this series - see page 51

Aggressive Wall Pedestal

"Don't Tread On Me"



Mounted by
World Champion
Jack Emery, IL

.....
"I enjoyed mounting the aggressive wall pedestal and the form was probably the easiest I have worked on. Excellent Form!!"

— Jack Emery

Note: Jack altered form for open mouth and table pedestal
.....



*altered for Table Pedestal



Aggressive Wall Pedestal

Form No.	A	B	C	D	Turn	Price
DTOM21	7 1/2	21	19	21 1/2	LT	91.35
DTOM23	7 3/4	23	20 3/4	27 1/8	LT	92.85
DTOM25	8	25	22 1/2	29 1/2	LT	94.35

Use round eyes for this series - see page 51

A = 6 1/2 - 6 3/4" use 30mm eyes

A = 7 - 8 1/4" use 32mm eyes



Remember what Jack won?

2011 World Taxidermy Convention

*1st and 2nd place
Best of Category*

Kentucky 2011 Convention

*1st place Master's division
McKenzie Taxidermist Choice Award
The Woody Award.*

Nationals in Rogers, Arkansas

*1st and 2nd in open class
The buck on the right won 1st place Majors Award
National Champion the Josh Bruchac Award.*

-JACK EMERY-

2013 World Taxidermy Champion



Hide & Seek



Mounted by
Todd Hefty
using 20F
7 3/4 x 23



Mounted by Team
Chuck Watson, II.
& Dan McKee, II.



Hide and Seek

Form No.	A	B	C	D	Turn	Price
20A	7	17 1/2	16	19 1/2	LT	82.96
20B	7 1/4	19	17 3/4	21 1/4	LT	85.75
20C	7	20	18 1/4	22 3/4	LT	86.76
20D	6 7/8	21	18 3/4	24	LT	89.14
20E	7 1/2	22	19 3/4	25	LT	88.39
20F	7 3/4	23	20 1/2	26	LT	90.17

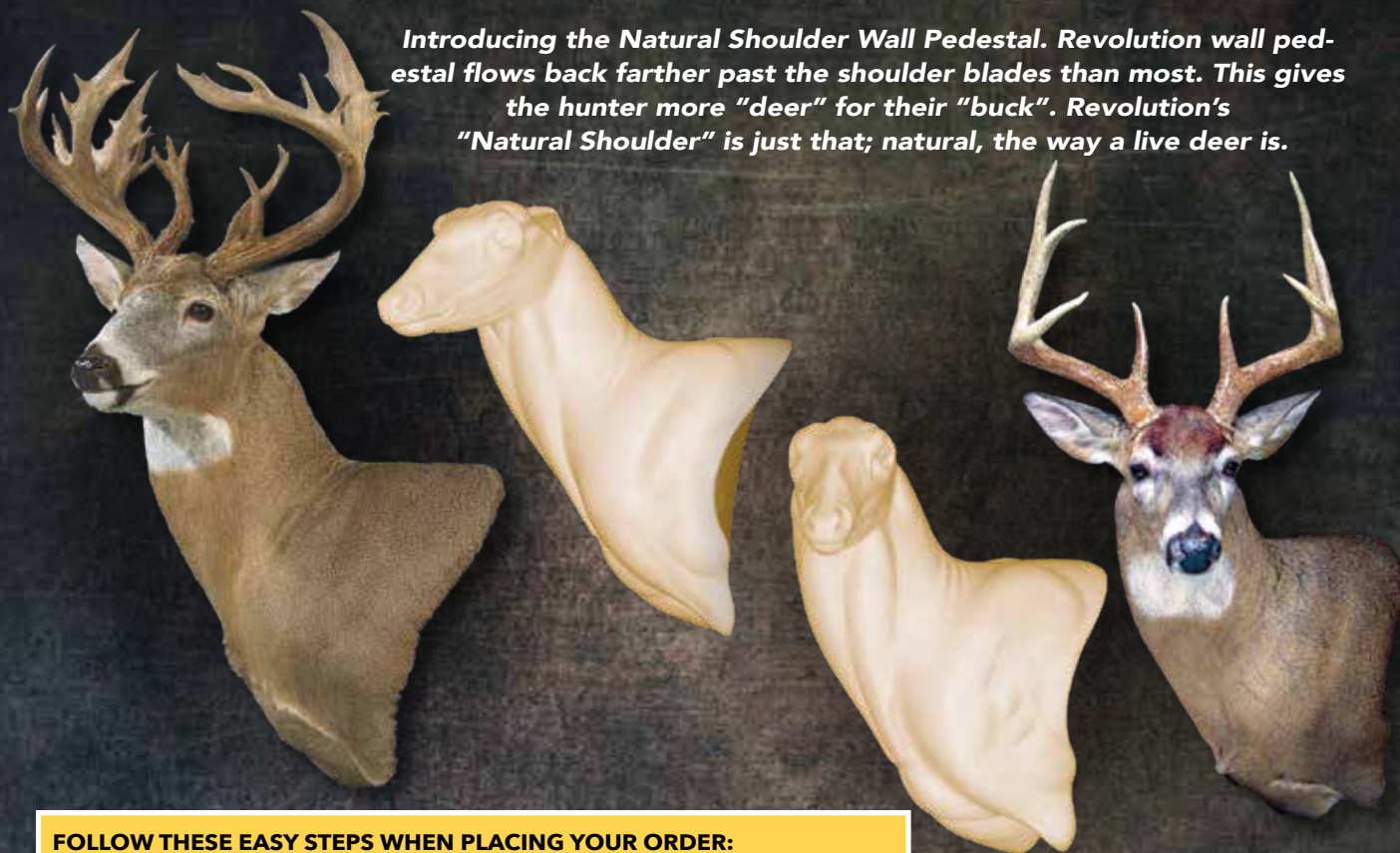
Use Accufast eyes for this series - see page 50

A = 6 1/2 - 6 3/4" use 30mm eyes

A = 7 - 8 1/4" use 32mm eyes

Natural Shoulder Wall Pedestal

Introducing the Natural Shoulder Wall Pedestal. Revolution wall pedestal flows back farther past the shoulder blades than most. This gives the hunter more "deer" for their "buck". Revolution's "Natural Shoulder" is just that; natural, the way a live deer is.



FOLLOW THESE EASY STEPS WHEN PLACING YOUR ORDER:

Step 1: Choose the size form you need (for example: 1672).

Step 2: Choose the head you want, without or with ear butts (for example: 1672-AEC)

Step 3: Order the form (for example: 1672-AEC)

Quick Find	Partial Form Number	A	B	C	D	Turn	Custom Techno Head Options (suffix)	Price without Ear Butts	Custom Techno Head Options with Ear Butts (suffix)	Price with Ear Butts
7 1/4	1672	7 1/4	18	17 1/2	21 1/4	LT	A, B, C, E, I	79.70	EU, EV, EW, EX, EA, EB, EC, ED, AEC, AEW	87.45
	1673	7 1/4	18	17 1/2	21 1/4	RT	A, B, C, E, I	79.70	EU, EV, EW, EX, EA, EB, EC, ED, AEC, AEW	87.45
	1688	7 1/4	19	18	22 1/2	LT	A, B, C, E, I	81.60	EU, EV, EW, EX, EA, EB, EC, ED, AEC, AEW	89.35
	1689	7 1/4	19	18	22 1/2	RT	A, B, C, E, I	81.60	EU, EV, EW, EX, EA, EB, EC, ED, AEC, AEW	89.35
	1708	7 1/4	21	19	24 1/2	LT	A, B, C, E, I	85.10	EU, EV, EW, EX, EA, EB, EC, ED, AEC, AEW	92.85
	1709	7 1/4	21	19	24 1/2	RT	A, B, C, E, I	85.10	EU, EV, EW, EX, EA, EB, EC, ED, AEC, AEW	92.85
7 1/2	1724-TC	7 1/2	21	19	24 1/4	LT	Total Concept	85.10	N/A	---
	1725-TC	7 1/2	21	19	24 1/4	RT	Total Concept	85.10	N/A	---
7 3/4	1736-TC	7 3/4	23	20 3/4	27 1/8	LT	Total Concept	86.85	N/A	---
	1737-TC	7 3/4	23	20 3/4	27 1/8	RT	Total Concept	86.85	N/A	---
8	1744-TC	8	25	22 1/2	29 1/2	LT	Total Concept	89.75	N/A	---
	1745-TC	8	25	22 1/2	29 1/2	RT	Total Concept	89.75	N/A	---

TOTAL CONCEPT Series Mannikins - Natural Shoulder Wall Pedestal

Custom Techno Head options page 4-6

3-N-1 Ear Butts page 48

Use round eyes for this series - see page 51

A = 6 1/2 - 6 3/4" use 30mm eyes

A = 7 - 8 1/4" use 32mm eyes

Curious Alert

Have you ever had a deer spot you, but not know quite what you are? They will sway their neck back and forth, staring at you on high alert, but curious enough that they haven't bolted yet. Thus the name "Curious Alert".



*Mounted by
Todd Hefty, WI*

*Shot by Willie Robertson of
Duck Dynasty on Double Dime
Ranch owned by Chipper
Jones, future Hall of Fame
Atlanta Braves baseball player.*



*Mounted by
Boxie Kallina, TX*



*Mounted by
Paul Cook, WV*

Curious Alert



2015-I
7 1/4 x 21



Mounted by
world champion
Ashley Barret, IA

Curious Alert

NOTE: Head Types

3-N-1 Ear Butts see page 48

TOTAL CONCEPT: 3-N-1 Ear Butt, Zero Clearance Eye Socket, Auto Antler, Nose Cleft

Quick Find	Partial Form Number	A	B	C	D	Turn	Custom Techno Head Options (suffix)	Price without Ear Butts	Custom Techno Head Options with Ear Butts (suffix)	Price with Ear Butts
7 1/4	2013	7 1/4	18	17 1/2	21 1/4	STR	A, B, C, E, I	76.65	EU, EV, EW, EX, EA, EB, EC, ED, AEC, AEW	84.40
	2014	7 1/4	19	18	22 1/2	STR	A, B, C, E, I	77.95	EU, EV, EW, EX, EA, EB, EC, ED, AEC, AEW	85.70
	2015	7 1/4	21	19	24 1/2	STR	A, B, C, E, I	80.80	EU, EV, EW, EX, EA, EB, EC, ED, AEC, AEW	88.55
7 1/2	2016	7 1/2	21	19 1/2	24 3/4	STR	F, J, N	80.80	EE, EF, EG, EH, AEG, MEA	88.55
	2017	7 1/2	22	19 1/2	25 3/4	STR	F, J, N	81.60	EE, EF, EG, EH, AEG, MEA	89.35
7 3/4	2018	7 3/4	23	21	27 1/2	STR	D, G, K, P	82.70	EI, EJ, EK, EL, AEK	90.45
8	2019	8	25	22 1/2	29 1/2	STR	H, L	83.80	N/A	---

FOLLOW THESE EASY STEPS WHEN PLACING YOUR ORDER:

Step 1: Choose the size form you need (for example: 2013).

Step 2: Choose the head you want, without or with ear butts (for example: 2013-AEC)

Step 3: Order the form (for example: 2013-AEC)

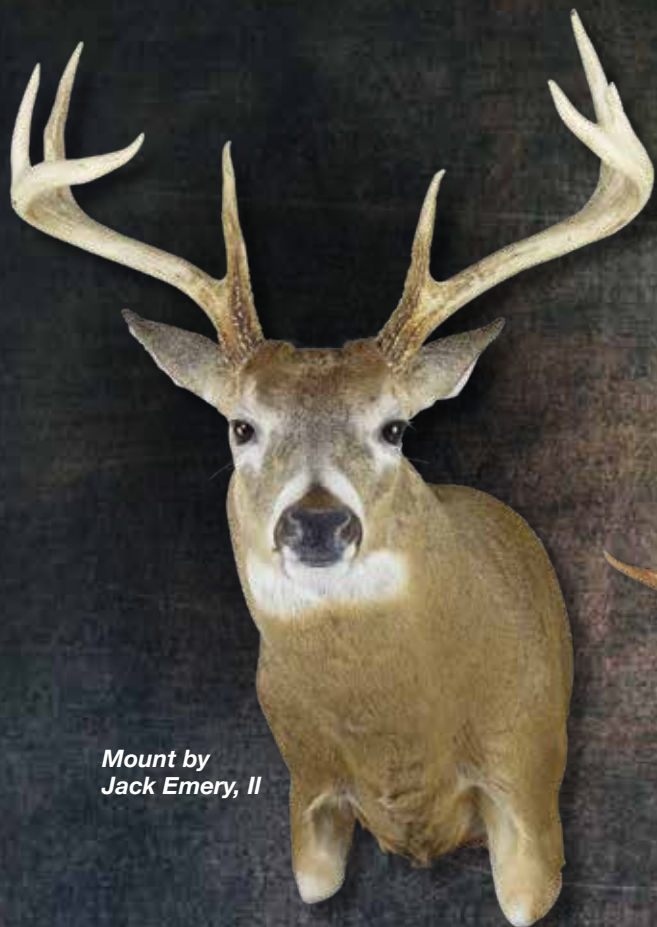
Use round eyes for this series - see page 51

A = 6 1/2 - 6 3/4" use 30mm eyes

A = 7 - 8 1/4" use 32mm eyes

High Alert

The High Alert is a shoulder mount plus. The shoulder extends behind the legs making the deer look larger. The movement in the legs and alert head position give the mount a unique expression.



*Mount by
Jack Emery, II*



*Mount by
Darwin Thomas, LA*



High Alert - Total Concept Series Mannikins

Form Number	A	B	Turn	Price
HA-7121L	7 1/2	21	LT	95.92

Use 32mm round eyes for this series - page 51

Relaxed Sweep Strong Offset



.....
"The new Relaxed Sweep form
should win the new form award, my
favorite!"

.....
— Dan Roberts, II.
.....

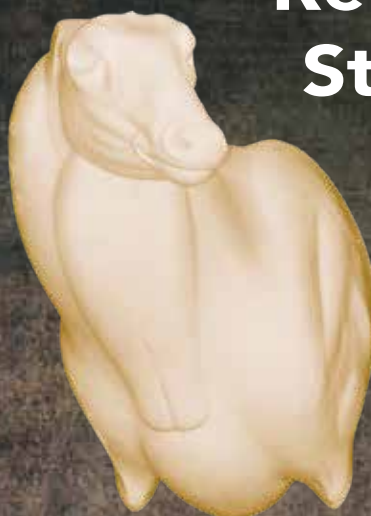


.....
"I love how your busted form and relaxed
sweep series look on the wall."

.....
— Ryan Fischer , WI.
.....

Mounts by
Chuck Watson, IL

Relaxed Sweep Strong Offset



FOLLOW THESE EASY STEPS WHEN PLACING YOUR ORDER:

Step 1: Choose the size form you need
(for example: 1145).

Step 2: Choose the head you want,
without or with ear butts (for
example: 1145-AEC)

Step 3: Order the form
(for example: 1145-AEC)

Relaxed Sweep Strong Offset

TOTAL CONCEPT Series Mannikins - Relaxed Sweep Strong Offset

Custom Techno Head options page 4-6

3-N-1 Ear Butts page 48

Use round eyes for this series - see page 51

A = 6 1/2 - 6 3/4" use 30mm eyes

A = 7 - 8 1/4" use 32mm eyes

Quick Find	Partial Form Number	A	B	C	D	Turn	Custom Techno Head Options (suffix)	Price without Ear Butts	Custom Techno Head Options with Ear Butts (suffix)	Price with Ear Butts
7 1/8	1136-TC	7 1/8	18	17 1/2	21 1/4	LT	Total Concept	76.65	N/A	---
	1137-TC	7 1/8	18	17 1/2	21 1/4	RT	Total Concept	76.65	N/A	---
7 3/8	AS40C	7 3/8	19	18	22 1/2	LT	Advanced Technology	77.95	N/A	---
7 1/4	1145	7 1/4	19	18	22 1/2	RT	A, B, C, E, I	77.95	EU, EV, EW, EX, EA, EB, EC, ED, AEC, AEW	85.70
	1152	7 1/4	20	18 5/8	23 1/2	LT	A, B, C, E, I	79.05	EU, EV, EW, EX, EA, EB, EC, ED, AEC, AEW	86.80
	1153	7 1/4	20	18 5/8	23 1/2	RT	A, B, C, E, I	79.05	EU, EV, EW, EX, EA, EB, EC, ED, AEC, AEW	86.80
	1104	7 1/4	21	19	24 1/2	LT	A, B, C, E, I	80.80	EU, EV, EW, EX, EA, EB, EC, ED, AEC, AEW	88.55
	1105	7 1/4	21	19	24 1/2	RT	A, B, C, E, I	80.80	EU, EV, EW, EX, EA, EB, EC, ED, AEC, AEW	88.55
7 1/2	1176	7 1/2	21	19	24 1/2	LT	F, J, N	80.80	EE, EF, EG, EH, AEG, MEA	88.55
	AS40F	7 1/2	21	19	24 1/2	RT	Advanced Technology	80.80	N/A	---
	1184	7 1/2	22	20 1/4	25 3/4	LT	D, G, J, P	81.60	EI, EJ, EK, EL, AEK	89.35
	1185	7 1/2	22	20 1/4	25 3/4	RT	D, G, J, P	81.60	EI, EJ, EK, EL, AEK	89.35
7 3/4	1192	7 3/4	23	20 3/4	27 1/8	LT	D, G, J, P	82.70	EI, EJ, EK, EL, AEK	90.45
	AS40H	7 3/4	23	20 3/4	27 1/8	RT	Advanced Technology	82.70	N/A	---
	1200	7 3/4	24	21 1/4	28 3/8	LT	D, G, K, P	82.70	EI, EJ, EK, EL, AEK	90.45
	1201	7 3/4	24	21 1/4	28 3/8	RT	D, G, K, P	82.70	EI, EJ, EK, EL, AEK	90.45
8	1208	8	25	22 1/2	29 1/2	LT	H, L	83.40	N/A	---
	1209-TC	8	25	22 1/2	29 1/2	RT	Total Concept	83.80	N/A	---

Semi-Sneak Offset

THE INTIMIDATOR

**LARGEST MANNIKIN
ON THE MARKET 8 1/8 x 28**

"Thanks for a HUGE form and it was nice to mount on and I am sure I will be ordering a few for the large necked deer that come in." — Mike Richards, WI

"Your new forms make a smokin' customer mount. They love them. I've also turned your 'Last Chance' into a pedestal mount."

— Mitch Webb, AK.



*Mounts by
Chuck Watson, IL.*



AS29G-L
8 x 26 1/2 x 22 1/2
x 31 1/2



FOLLOW THESE EASY STEPS WHEN PLACING YOUR ORDER:

- Step 1: Choose the size form you need
(for example: 1142).
- Step 2: Choose the head you want,
without or with ear butts (for
example: 1142-AEC)
- Step 3: Order the form
(for example: 1142-AEC)

HEAD TYPES

TOTAL CONCEPT: 3-N-1 Ear Butt, Zero Clearance Eye Socket, Auto Antler, Nose Cleft/Antler Mannikin Graph

P: Total Concept features except 3-N-1 Ear Butt bases

ADVANCED TECHNOLOGY: Standard Head Type

SYMMETRY SET: Standard Head Type

Custom Techno Head options page 4-6

3-N-1 Ear Butts page 48

Use round eyes for this series - see page 51

A = 6 1/2 - 6 3/4" use 30mm eyes

A = 7 - 8 1/4" use 32mm eyes

Quick Find	Partial Form Number	A	B	C	D	Turn	Custom Techno Head Options (suffix)	Price without Ear Butts	Custom Techno Heads with Ear Butts (suffix)	Price with Ear Butts
6 3/4	1002-TC	6 3/4	16	16	17 1/2	LT	Total Concept	73.00	N/A	---
	1003-TC	6 3/4	16	16	17 1/2	RT	Total Concept	73.00	N/A	---
7 1/8	1134-TC	7 1/8	18	17 1/2	21 1/4	LT	Total Concept	76.65	N/A	---
	1135-TC	7 1/8	18	17 1/2	21 1/4	RT	Total Concept	76.65	N/A	---
7 1/4	1142	7 1/4	19	18	22 1/2	LT	A, B, C, E, I	77.95	EU, EV, EW, EX, EA, EB, EC, ED, AEC, AEW	85.70
	1143	7 1/4	19	18	22 1/2	RT	A, B, C, E, I	77.95	EU, EV, EW, EX, EA, EB, EC, ED, AEC, AEW	85.70
	1066	7 1/4	20	18 5/8	23 1/2	LT	A, B, C, E, I	79.05	EU, EV, EW, EX, EA, EB, EC, ED, AEC, AEW	86.80
	1067	7 1/4	20	18 5/8	23 1/2	RT	A, B, C, E, I	79.05	EU, EV, EW, EX, EA, EB, EC, ED, AEC, AEW	86.80
	1102	7 1/4	21	19	24 1/2	LT	A, B, C, E, I	80.80	EU, EV, EW, EX, EA, EB, EC, ED, AEC, AEW	88.55
	1103	7 1/4	21	19	24 1/2	RT	A, B, C, E, I	80.80	EU, EV, EW, EX, EA, EB, EC, ED, AEC, AEW	88.55
	2022	7 1/4	22	19	25 3/4	LT	A, B, C, E, I	81.60	EU, EV, EW, EX, EA, EB, EC, ED, AEC, AEW	89.35
	2023	7 1/4	22	19	25 3/4	RT	A, B, C, E, I	81.60	EU, EV, EW, EX, EA, EB, EC, ED, AEC, AEW	89.35
	2026	7 1/4	23	20	27 1/8	LT	A, B, C, E, I	82.65	EU, EV, EW, EX, EA, EB, EC, ED, AEC, AEW	90.40
	2027	7 1/4	23	20	27 1/8	RT	A, B, C, E, I	82.65	EU, EV, EW, EX, EA, EB, EC, ED, AEC, AEW	90.40
7 1/2	1174	7 1/2	21	19	24 1/2	LT	F, J, N	80.80	EE, EF, EG, EH, AEG, MEA	88.55
	1175	7 1/2	21	19	24 1/2	RT	F, J, N	80.80	EE, EF, EG, EH, AEG, MEA	88.55
	1644	7 1/2	22	20 1/4	25 3/4	LT	J	80.80	N/A	---
	1645	7 1/2	22	20 1/4	25 3/4	RT	J	80.80	N/A	---
	1650	7 1/2	23	20 3/4	27 1/8	LT	P	82.70	N/A	---
	1651	7 1/2	23	20 3/4	27 1/8	RT	P	82.70	N/A	---
7 3/4	S15C	7 3/4	22	20 1/4	25 3/4	LT	Symmetry Set	81.60	N/A	---
	S15D	7 3/4	22	20 1/4	25 3/4	RT	Symmetry Set	81.60	N/A	---
	1190	7 3/4	23	20 3/4	27 1/8	LT	D, G, K, P	82.70	EI, EJ, EK, EL, AEK	90.45
	1191	7 3/4	23	20 3/4	27 1/8	RT	D, G, K, P	82.70	EI, EJ, EK, EL, AEK	90.45
	ASH17B	7 3/4	24	20 3/4	27 1/8	LT	P	83.40	N/A	---
	ASH17C	7 3/4	24	20 3/4	27 1/8	RT	P	83.40	N/A	---
8	1206	8	25	22 1/2	29 1/2	LT	H, L	83.80	N/A	---
	1207	8	25	22 1/2	29 1/2	RT	H, L	83.80	N/A	---

Intimidator Series

Form Number	A	B	C	D	Turn	Custom Techno Head Options	Price
AS29G-L	8	26 1/2	22 1/2	31 1/2	LT	Advanced Technology	85.55
AS29H-L	8	26 1/2	22 1/2	31 1/2	RT	Advanced Technology	85.55
AS29C-L	8 1/8	28	24	33	LT	Advanced Technology	90.00
AS29D-L	8 1/8	28	24	33	RT	Advanced Technology	90.00

Semi-Upright Offset

**FOLLOW THESE EASY STEPS
WHEN PLACING YOUR ORDER:**

Step 1: Choose the size form you need
(for example: 1140).

Step 2: Choose the head you want,
without or with ear butts (for
example: 1140-AEC)

Step 3: Order the form
(for example: 1140-AEC)

*Mounts by
Chuck Watson, IL*

*"I mounted on your Semi-Up
Offset. It mounted up very easy
and I was pleased with the results."
— Louis Gagliano, NJ.*

HEAD TYPES

TOTAL CONCEPT: 3-N-1 Ear Butt, Zero Clearance Eye Socket, Auto Antler, Nose Cleft/Antler Mannikin Graph

P: Total Concept features except 3-N-1 Ear Butt bases

ADVANCED TECHNOLOGY: Standard Head Type

SYMMETRY SET: Standard Head Type

Custom Techno Head options page 4-6

3-N-1 Ear Butts page 48

Use round eyes for this series - see page 51

A = 6 1/2 - 6 3/4" use 30mm eyes

A = 7 - 8 1/4" use 32mm eyes

Quick Find	Partial Form Number	A	B	C	D	Turn	Custom Techno Head Options (suffix)	Price	Custom Techno Head Options with ear butts (suffix)	Price with ear butts
6 3/4	1000-TC	6 3/4	16	16	17 1/2	LT	Total Concept	73.00	N/A	---
	1001-TC	6 3/4	16	16	17 1/2	RT	Total Concept	73.00	N/A	---
6 7/8	2000-TC	6 7/8	17	16 3/4	19 3/4	LT	Total Concept	74.25	N/A	---
	2001-TC	6 7/8	17	16 3/4	19 3/4	RT	Total Concept	74.25	N/A	---
7 1/8	1132-TC	7 1/8	18	17 1/2	21 1/4	LT	Total Concept	76.65	N/A	---
	1133-TC	7 1/8	18	17 1/2	21 1/4	RT	Total Concept	76.65	N/A	---
7 1/4	1140	7 1/4	19	18	22 1/2	LT	A, B, C, E, I	77.95	EU, EV, EW, EX, EA, EB, EC, ED, AEC, AEW	85.70
	1141	7 1/4	19	18	22 1/2	RT	A, B, C, E, I	77.95	EU, EV, EW, EX, EA, EB, EC, ED, AEC, AEW	85.70
	1064	7 1/4	20	18 5/8	23 1/2	LT	A, B, C, E, I	79.05	EU, EV, EW, EX, EA, EB, EC, ED, AEC, AEW	86.80
	1065	7 1/4	20	18 5/8	23 1/2	RT	A, B, C, E, I	79.05	EU, EV, EW, EX, EA, EB, EC, ED, AEC, AEW	86.80
	1100	7 1/4	21	19	24 1/2	LT	A, B, C, E, I	80.80	EU, EV, EW, EX, EA, EB, EC, ED, AEC, AEW	88.55
	1101	7 1/4	21	19	24 1/2	RT	A, B, C, E, I	80.80	EU, EV, EW, EX, EA, EB, EC, ED, AEC, AEW	88.55
	2020	7 1/4	22	19	25 3/4	LT	A, B, C, E, I	81.60	EU, EV, EW, EX, EA, EB, EC, ED, AEC, AEW	89.35
	2021	7 1/4	22	19	25 3/4	RT	A, B, C, E, I	81.60	EU, EV, EW, EX, EA, EB, EC, ED, AEC, AEW	89.35
	2024	7 1/4	23	20	27 1/8	LT	A, B, C, E, I	82.65	EU, EV, EW, EX, EA, EB, EC, ED, AEC, AEW	90.40
	2025	7 1/4	23	20	27 1/2	RT	A, B, C, E, I	82.65	EU, EV, EW, EX, EA, EB, EC, ED, AEC, AEW	90.40
7 1/2	2004	7 1/2	19	18 1/2	22 1/2	LT	F, J, N	79.35	EE, EF, EG, EH, AEG, MEA	87.10
	2005	7 1/2	19	18 1/2	22 1/2	RT	F, J, N	79.35	EE, EF, EG, EH, AEG, MEA	87.10
	1172	7 1/2	21	19	24 1/2	LT	F, J, N	80.80	EE, EF, EG, EH, AEG, MEA	88.55
	1173	7 1/2	21	19	24 1/2	RT	F, J, N	80.80	EE, EF, EG, EH, AEG, MEA	88.55
	1642	7 1/2	22	20 1/4	5 3/4	LT	J	81.60	N/A	---
	1643	7 1/2	22	20 1/4	25 3/4	RT	J	81.60	N/A	---
	1648	7 1/2	23	20 3/4	27 1/8	LT	P	82.65	N/A	---
	1649	7 1/2	23	20 3/4	27 1/8	RT	P	82.65	N/A	---
7 3/4	2008	7 3/4	21	20	24 1/2	LT	D, G, K, P	80.80	EI, EJ, EK, EL, AEK	88.55
	2009	7 3/4	21	20	24 1/2	RT	D, G, K, P	80.80	EI, EJ, EK, EL, AEK	88.55
	S19D	7 3/4	22	20 1/4	25 3/4	LT	Symmetry Set	81.60	N/A	---
	S19E	7 3/4	22	20 1/4	25 3/4	RT	Symmetry Set	81.60	N/A	---
	1188	7 3/4	23	20 3/4	27 1/8	LT	D, G, K, P	82.65	EI, EJ, EK, EL, AEK	90.40
	1189	7 3/4	23	20 3/4	27 1/8	RT	D, G, K, P	82.65	EI, EJ, EK, EL, AEK	90.40
	1660-TC	7 3/4	24	21 1/4	27 1/8	LT	Total Concept	83.40	N/A	---
	1661-TC	7 3/4	24	21 1/4	27 1/8	RT	Total Concept	83.40	N/A	---
8	1204	8	25	22 1/2	29 1/2	LT	H, L	83.80	N/A	---
	1205	8	25	22 1/2	29 1/2	RT	H, L	83.80	N/A	---

Intimidator Series

Form No.	A	B	C	D	Turn	Custom Techno Head Option	Price
AS29E-L	8	26 1/2	22 1/2	31 1/2	LT	Advanced Technology	90.00
AS29F-L	8	26 1/2	22 1/2	31 1/2	RT	Advanced Technology	90.00
AS29A-L	8 1/8	28	24	33	LT	Advanced Technology	90.00
AS29B-L	8 1/8	28	24	33	RT	Advanced Technology	90.00

The Evolution



*Mounts by
Chris Moeller, KS.*



*Mount by
Mike Jenkinson, WI.*



2053-1
7 1/4 x 20

**Darwin was wrong,
this Evolution is right!**

The Evolution

**Darwin was wrong,
this Evolution is right!**

If you want to be the "leading edge" taxidermist in your area, Revolution's "Evolution" will evolve your whitetail business to the next level. Okay, what's better about this mannikin? We call it the "more" deer. It has "more" style, "more" leg, "more" shoulder, "more" offset and "more" head turn.



2053-I
7 1/4 x 20

FOLLOW THESE EASY STEPS WHEN PLACING YOUR ORDER:

Step 1: Choose the size form you need (for example: 2048).

Step 2: Choose the head you want, without or with ear butts (for example: 2048-AEC)

Step 3: Order the form (for example: 2048-AEC)

TOTAL CONCEPT Series Mannikins - Natural Wall Pedestal

Custom Techno Head options page 4-6

3-N-1 Ear Butts page 48

Use round eyes for this series - see page 51

A = 6 1/2 - 6 3/4" use 30mm eyes

A = 7 - 8 1/4" use 32mm eyes

Quick Find	Partial Form Number	A	B	C	D	Turn	Custom Techno Head Options (suffix)	Price	Custom Techno Head Options with ear butts (suffix)	Price with ear butts
7 1/4	2048	7 1/4	18	17 3/4	21 1/4	RT	A, B, C, E, I	80.44	EU, EV, EW, EX, EA, EB, EC, ED, AEC, AEW	88.19
	2049	7 1/4	18	17 3/4	21 1/4	LT	A, B, C, E, I	80.44	EU, EV, EW, EX, EA, EB, EC, ED, AEC, AEW	88.19
	2050	7 1/4	19	18	22 3/4	RT	A, B, C, E, I	81.84	EU, EV, EW, EX, EA, EB, EC, ED, AEC, AEW	89.59
	2051	7 1/4	19	18	22 3/4	LT	A, B, C, E, I	81.84	EU, EV, EW, EX, EA, EB, EC, ED, AEC, AEW	89.59
	2052	7 1/4	20	18 1/2	23	RT	A, B, C, E, I	83.00	EU, EV, EW, EX, EA, EB, EC, ED, AEC, AEW	90.75
	2053	7 1/4	20	18 1/2	23	LT	A, B, C, E, I	83.00	EU, EV, EW, EX, EA, EB, EC, ED, AEC, AEW	90.75
7 1/2	2054	7 1/2	21	19 1/2	24 3/4	RT	F, J, N	84.85	EE, EF, EG, EH, AEG, MEA	92.60
	2055	7 1/2	21	19 1/2	24 3/4	LT	F, J, N	84.85	EE, EF, EG, EH, AEG, MEA	92.60
7 3/4	2056	7 3/4	23	21	27 1/2	RT	D, G, K, P	86.89	EI, EJ, EK, EL, AEK	94.64
	2057	7 3/4	23	21	27 1/2	LT	D, G, K, P	86.89	EI, EJ, EK, EL, AEK	94.64
8	2058	8	25	22 1/2	29 3/4	RT	H, L	88.13	N/A	---
	2059	8	25	22 1/2	29 3/4	LT	H, L	88.13	N/A	---

The Busted

.....

"BUSTED."

The whitetail deer is said to be the sharpest of all game animals. Have you ever been in your tree stand with a deer approaching, the wind is perfect, you're motionless and all of a sudden he snaps his head up and man, I'm "busted." This strong offset alert looking deer will please the fussy hunter who loves whitetails.

.....



*Shot, sculpted and mounted by
Brian Johnson, WI.*

The Busted



FOLLOW THESE EASY STEPS WHEN PLACING YOUR ORDER:

Step 1: Choose the size form you need (for example: 1062).

Step 2: Choose the head you want, without or with ear butts (for example: 1062-AEC)

Step 3: Order the form (for example: 1062-AEC)

The Busted

TOTAL CONCEPT Series Mannikins - The Busted

Custom Techno Head options page 4-6

3-N-1 Ear Butts page 48

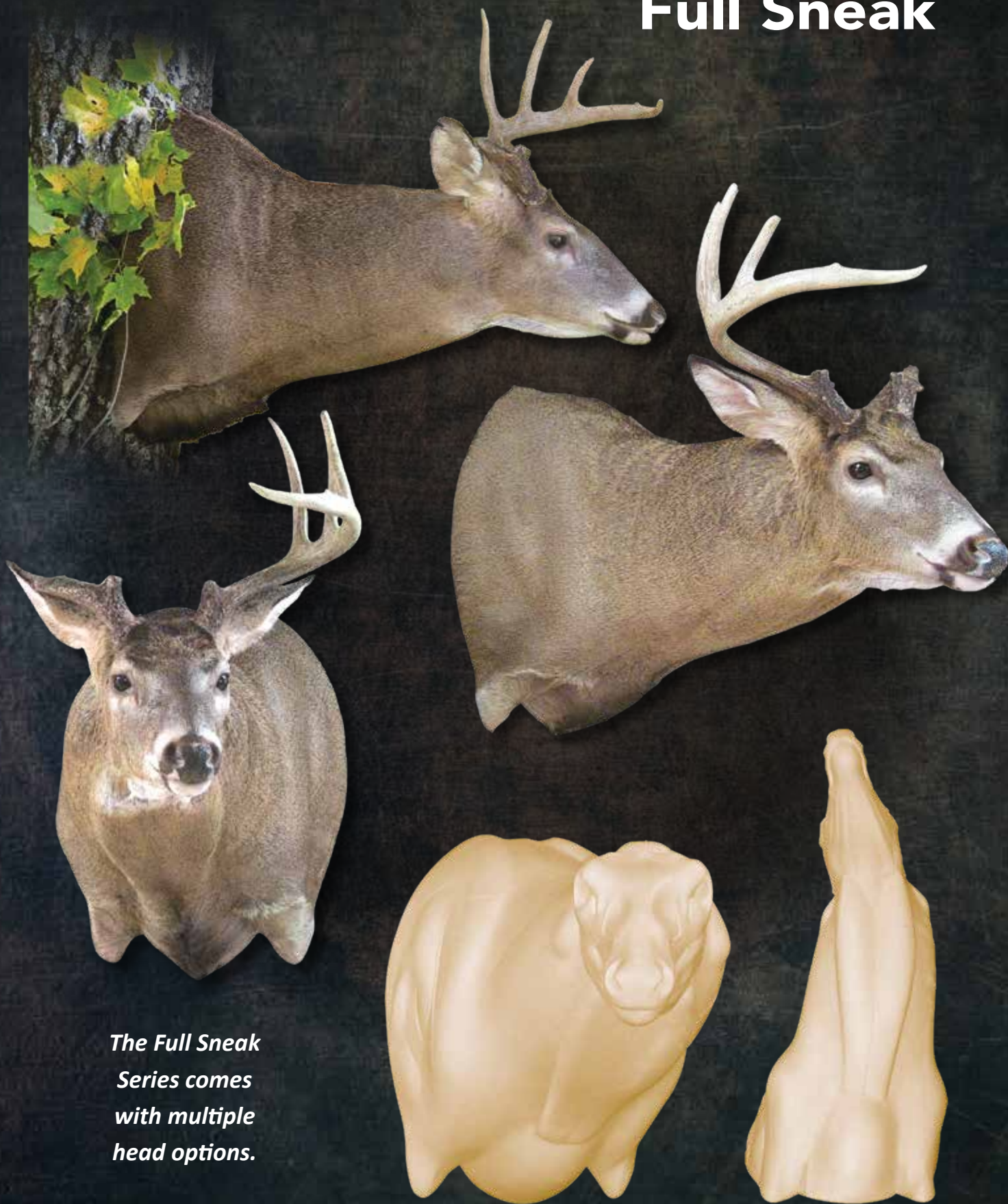
Use round eyes for this series - see page 51

A = 6 1/2 - 6 3/4" use 30mm eyes

A = 7 - 8 1/4" use 32mm eyes

Quick Find	Partial Form Number	A	B	C	D	Turn	Custom Techno Head Options (suffix)	Price without Ear Butts	Custom Techno Head options with Ear Butts (suffix)	Price with Ear Butts
7 1/8	1030-TC	7 1/8	18	17 1/2	21 1/4	LT	Total Concept	76.65	N/A	---
	1031-TC	7 1/8	18	17 1/2	21 1/4	RT	Total Concept	76.65	N/A	---
7 1/4	1062	7 1/4	19	18	22 1/2	LT	A, B, C, E, I	77.95	EU,EV,EW,EX,EA,EB, EC, ED, AEC, AEW	85.70
	1063	7 1/4	19	18	25 1/2	RT	A, B, C, E, I	77.95	EU,EV,EW,EX,EA,EB, EC, ED, AEC, AEW	85.70
	1068	7 1/4	20	18 5/8	23 1/2	LT	A, B, C, E, I	79.05	EU,EV,EW,EX,EA,EB, EC, ED, AEC, AEW	86.80
	1069	7 1/4	20	18 5/8	23 1/2	RT	A, B, C, E, I	79.05	EU,EV,EW,EX,EA,EB, EC, ED, AEC, AEW	86.80
	1108	7 1/4	21	19	24 1/2	LT	A, B, C, E, I	80.80	EU,EV,EW,EX,EA,EB, EC, ED, AEC, AEW,	88.55
	1109	7 1/4	21	19	24 1/2	RT	A, B, C, E, I	80.80	EU,EV,EW,EX,EA,EB, EC, ED, AEC, AEW	88.55
7 1/2	1640	7 1/2	21	19	24 1/2	LT	F, J, N	80.80	EE, EF, EG, EH, AEG, MEA	88.55
	1641	7 1/2	21	19	24 1/4	RT	F, J, N	80.80	EF, EG, EH, AEG, MEA	88.55
7 3/4	1658	7 3/4	23	20 3/4	27 1/8	LT	D, G, K	82.65	EI, EJ, EK, EL, AEK	90.40
	1659	7 3/4	23	20 3/4	27 1/8	RT	D, G, K	82.65	EI, EJ, EK, EL, AEK	90.40
8	1666-TC	8	25	22 1/2	29 1/2	LT	Total Concept	83.80	N/A	---
	1667-TC	8	25	22 1/2	29 1/2	RT	Total Concept	83.80	N/A	---

Full Sneak



*The Full Sneak
Series comes
with multiple
head options.*

TOTAL CONCEPT Series Mannikins - Full Sneaks

Custom Techno Head options page 4-6

3-N-1 Ear Butts page 48

Full Sneak

Quick Find	Partial Form Number	A	B	C	D	Turn	Custom Techno Head Options (suffix)	Price without Ear Butts	Custom Techno Head Options with Ear Butts (suffix)	Price with Ear Butts
7 1/4	2028	7 1/4	18	17 1/2	21 1/4	LT	A, B, C, E, I	76.65	EU, EV, EW, EX, EA, EB, EC, ED, AEC, AEW	84.40
	2029	7 1/4	18	17 1/2	21 1/4	RT	A, B, C, E, I	76.54	EU, EV, EW, EX, EA, EB, EC, ED, AEC, AEW	84.29
	2030	7 1/4	19	18	22 1/2	LT	A, B, C, E, I	78.10	EU, EV, EW, EX, EA, EB, EC, ED, AEC, AEW	85.85
	2031	7 1/4	19	18	22 1/2	RT	A, B, C, E, I	78.10	EU, EV, EW, EX, EA, EB, EC, ED, AEC, AEW	85.85
7 1/2	2032	7 1/2	21	19	24 1/2	LT	F, J, N	80.80	EE, EF, EG, EH, AEG, MEA	88.55
	2033	7 1/2	21	19	24 1/2	RT	F, J, N	80.80	EE, EF, EG, EH, AEG, MEA	88.55
7 3/4	2034	7 3/4	23	21	27 1/8	LT	D, G, K, P	82.70	EI, EJ, EK, EL, AEK	90.45
	2035	7 3/4	23	21	27 1/8	RT	D, G, K, P	82.70	EI, EJ, EK, EL, AEK	90.45
8	2036	8	25	22	29 1/2	LT	H, L	83.80	N/A	---
	2037	8	25	22	29 1/2	RT	H, L	83.80	N/A	---

FOLLOW THESE EASY STEPS WHEN PLACING YOUR ORDER:

Step 1: Choose the size form you need (for example: 2028).

Step 2: Choose the head you want, without or with ear butts (for example: 2028-AEC)

Step 3: Order the form (for example: 2028-AEC)

Use round eyes for this series - see page 51

A = 6 1/2 - 6 3/4" use 30mm eyes

A = 7 - 8 1/4" use 32mm eyes



Full Sneaks

SNEAK SWEEP

MANNIKINS

Use round eyes for this series - see page 51

A = 6 1/2 - 6 3/4" use 30mm eyes

A = 7 - 8 1/4" use 32mm eyes



.....
• I wanted to thank you for making such great products. I
• just started taxidermy in February 2010 and have done
• 12 mounts total so far. I took 2 mounts to the Iowa
• Taxidermy show in April and won blue ribbons for both.
• One was on the relaxed sweep and one on the sneak
• sweep. The attached picture is the sneak sweep that
• also won best in category. These forms fit Iowa deer
• perfectly and I can't say enough about the symmetry set
• eyes. You have earned a life long customer, Thanks!
• BRIAN REINERTSON
•

Sneak Sweep Strong Offset

FOLLOW THESE EASY STEPS WHEN PLACING YOUR ORDER:

Step 1: Choose the size form you need
(for example: 1146).

Step 2: Choose the head you want,
without or with ear butts (for
example: 1146-AEC)

Step 3: Order the form
(for example: 1146-AEC)



Sneak Sweep Strong Offset

TOTAL CONCEPT Series Mannikins - Sneak Sweeps

Custom Techno Head options page 4-6

3-N-1 Ear Butts page 48

Use round eyes for this series - see page 51

A = 6 1/2 - 6 3/4" use 30mm eyes

A = 7 - 8 1/4" use 32mm eyes

Quick Find	Partial Form Number	A	B	C	D	Turn	Custom Techno Head Options (suffix)	Price without Ear Butts	Custom Techno Head Options with Ear Butts (suffix)	Price with Ear Butts
7 1/8	1138	7 1/8	18	17 1/2	21 1/4	LT	No Head Options	76.65	N/A	---
	1139	7 1/8	18	17 1/2	21 1/4	RT	No Head Options	76.65	N/A	---
7 3/8	AS50D	7 3/8	19	18	22 1/2	RT	Advanced Technology	77.95	N/A	---
7 1/4	1146	7 1/4	19	18	22 1/2	LT	A, B, C, E, I	77.95	EU, EV, EW, EX, EA, EB, EC, ED, AEC, AEW	85.70
	1154	7 1/4	20	18 5/8	23 1/2	LT	A, B, C, E, I	79.05	EU, EV, EW, EX, EA, EB, EC, ED, AEC, AEW	86.80
	1155	7 1/4	20	18 5/8	23 1/2	RT	A, B, C, E, I	79.05	EU, EV, EW, EX, EA, EB, EC, ED, AEC, AEW	86.80
	1106	7 1/4	21	19	24 1/2	LT	A, B, C, E, I	80.80	EU, EV, EW, EX, EA, EB, EC, ED, AEC, AEW	88.55
	1107	7 1/4	21	19	24 1/2	RT	A, B, C, E, I	80.80	EU, EV, EW, EX, EA, EB, EC, ED, AEC, AEW	88.55
7 1/2	AS50E	7 1/2	21	19	24 1/2	LT	Advanced Technology	80.80	N/A	---
	1179	7 1/2	21	19	24 1/2	RT	F, J, N	80.80	EE, EF, EG, EH, AEG, MEA	88.55
	1186	7 1/2	22	20 1/4	25 3/4	LT	F, J, N	81.60	EE, EF, EG, EH, AEG, MEA	89.35
	1187	7 1/2	22	20 1/4	25 3/4	RT	F, J, N	81.60	EE, EF, EG, EH, AEG, MEA	89.35
7 3/4	AS50G	7 3/4	23	20 3/4	27 1/8	LT	Advanced Technology	82.70	N/A	---
	1195	7 3/4	23	20 3/4	27 1/8	RT	D, G, K, P	82.70	EI, EJ, EK, EL, AEK	90.45
	1202	7 3/4	24	21 1/4	28 3/8	LT	D, G, K, P	83.40	EI, EJ, EK, EL, AEK	91.15
	1203	7 3/4	24	21 1/4	28 3/8	RT	D, G, K, P	83.40	EI, EJ, EK, EL, AEK	91.15
8	1210-TC	8	25	22 1/2	29 1/2	LT	Total Concept	83.80	N/A	---
	1211	8	25	22 1/2	29 1/2	RT	H, L	83.80	N/A	---

STANDARD LEG

Table Pedestal

We offer two attachment systems for our table pedestals. The Threaded Rod System is designed for tremendous strength. The Square Tube system is designed for invisible attachment without the need to use habitat to cover the rod.



Mount by
Boxie Kallina



FOLLOW THESE EASY STEPS WHEN PLACING YOUR ORDER:

- Step 1: Choose the size form you need
(for example: 1752).
- Step 2: Choose the head you want,
without or with ear butts (for
example: 1752-AEC)
- Step 3: Order the form
(for example: 1752-AEC)

Standard Leg Table Pedestal

TOTAL CONCEPT Series Mannikins - Standard Leg Table Pedestals

Custom Techno Head options page 4-6

3-N-1 Ear Butts page 48

Use round eyes for this series - see page 51

A = 6 1/2 - 6 3/4" use 30mm eyes

A = 7 - 8 1/4" use 32mm eyes

Quick Find	Partial Form Number	A	B	C	D	Turn	Custom Techno Head Options (suffix)	Price without Ear Butts	Custom Techno Head Options with Ear Butts (suffix)	Price with Ear Butts
7 1/4	1752	7 1/4	18	17 1/2	21 1/4	LT	A, B, C, E, I	94.03	EU, EV, EW, EA, EB, EC, ED, AEC, AEW	101.78
	1768	7 1/4	19	18	22 1/2	LT	A, B, C, E, I	95.43	EU, EV, EW, EA, EB, EC, ED, AEC, AEW	103.18
	1788	7 1/4	21	19	24 1/2	LT	A, B, C, E, I	97.59	EU, EV, EW, EA, EB, EC, ED, AEC, AEW	105.34
7 1/2	1804-TC	7 1/2	21	19	24 1/4	LT	Total Concept	97.59	N/A	-
7 3/4	1816-TC	7 3/4	23	20 3/4	27 1/8	LT	Total Concept	99.43	N/A	-
8	1824-TC	8	25	22 1/2	29 1/2	LT	Total Concept	101.02	N/A	-

Table Pedestal attachment options

THREADED ROD SYSTEM



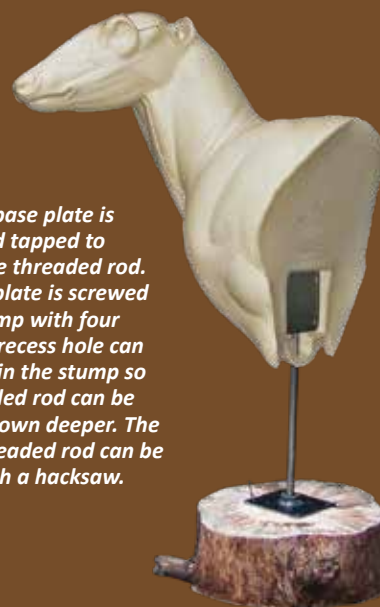
TRS
\$34.99

Notice the double dado slot in the form. The flat dado is made to fit the mannikin plate. The deeper concave dado is recessed for the welded rod or tube. The mannikin plate is aligned such that when the top of the plate is flush with the top of the dado slot the tube or threaded rod should be level. If the form needs to be micro adjusted, simply leave one screw in place and adjust the form to your liking. Then finish screwing the plate to the form. The plywood in the form extends up the into the shoulder for great strength.



Notice that there is a hole that you would drill through the bris-ket below the dado slot to receive the rod. We recommend screwing the mannikin plate to the form with six, two-inch screws that are completely threaded.

The steel base plate is drilled and tapped to receive the threaded rod. The base plate is screwed to the stump with four screws. A recess hole can be drilled in the stump so the threaded rod can be screwed down deeper. The excess threaded rod can be cut off with a hacksaw.



NOTE: With this super strong system you can micro-adjust the deer so the bris-ket lines up flawless with the habitat. The plate can also be attached to the under-side of the base. Just keep in mind that the weight of the deer will be held by the screws.



1. Drill a plumb oversize hole in your base. 3/4 of an inch works well.



2. Insert square solid rod in drilled hole, well.



3. Screw the mannikin tube plate to the form.



4. Drill a hole through the bot-tom of the form that is straight below the square tube.



5. Slide the mannikin tube plate onto the solid square rod.



6. You can now epoxy the rod in the base making sure the eyes are level. If you want the rod removable, you can grease the rod (petroleum jelly) before epoxying in place. Cut the rod to length and fill the slot even with the form with foam or Bond, etc...



A Threaded rod table pedestal is strong enough to support 65 lbs of weight!



B Mannikin on rock base The Square Tube System.

**SQUARE
TUBE
SYSTEM**

STS
\$34.99

PRO-LINE MANNIKINS

Use Accufast eyes for this series -
see page 50

A = 6 1/2 - 6 3/4" use 30mm eyes

A = 7 - 8 1/4" use 32mm eyes



A HIGH QUALITY FORM THAT SAVES YOU TIME.

If you're asking why in the world would we make a form that doesn't have any legs and is basically boring looking, then we know we've caught your attention.

This form is not a creative art piece, it is a business tool. A little background material will help you understand. With the economy being lackluster, it has negatively affected many taxidermists' bottom line. With fewer deer being mounted, some taxidermists have lowered their prices just to get work. It seems that there's always a "basement bandit" doing poor quality work at just above the cost of materials. This Pro-line can be used if you're business savvy to get some of his customers and upgrade them to your quality and prices.

So let's look at a typical situation. The phone rings on Monday after opening day. The father of the twelve year old who just shot his first buck asks "how much do you charge for a shoulder mount?" You tell him your price and he says the guy down the street is one-hundred dollars cheaper. The father, who is only working part-time, says thank you, hangs up the phone and takes his son's six-pointer to the guy down the road. So let's redo the scenario using the Pro-line mannikin as a business tool.

The phone rings and the father asks the "price question". Instead of telling him just one price, you give him two prices. When the father asks "why two prices?" you tell him just like when you buy a cape, you can pay different prices for different features. You ask him to visit your display room and you can show him in person his different options. He stops in and you show him your regular priced mount, and then you show him the Pro-line mount, which is \$75.00 cheaper than your high end mount, but it's \$25.00 more than the guy down the road.

The father sees that for \$25.00 more than the guy down the road, he's getting a very professional mount, but without all the bells and whistles. Next year he shoots a bigger buck and brings it to you, because he was pleased with his son's mount, and now you've got a customer you would otherwise not have and he's paying your top price.

Now most taxidermists don't offer two prices, which is an advantage to you if you do. We're sure you are asking "how can I mount a deer for \$75.00 less and not lose \$75.00? Our Pro-line form is about \$6.00 dollars cheaper. The real savings is in mounting time. The Pro-line form should mount up in about an hour or more quickly than normal. The Auto Antler set saves time setting antlers. The Ultimate Pro ear butts are included in this form. This saves time and any cost of buying extra ear butts. The Antler Slot is very narrow and needs very little filler. The ear liners fit in perfectly to the ear butts, which are symmetrical, saving you time in setting and placing the ears. There are no legs and there is less shoulder-sewing, fitting and stapling is quicker. The eye sockets use Accufast eyes, which can save an hour of clay setting and skin fitting time. Our hunch is that about half of the price shoppers that come in to see your work will pick the higher priced mount. The obvious difference to the common customer is that the Pro-line doesn't have legs. The face is great, it is just limited to both ears back.

To be very clear, this is not a poor quality form. It is a high quality form, just without legs and deep shoulders. Hopefully this will give you food for thought, and get you a few new customers. Don't follow the crowd, be the leader and have them follow you.

Pro-Line

Offer a cheaper option to your customers with the Pro-Line Mannikins. This series is perfect for those capes that come in cut too short or the guy wanting a cheaper option to save himself a little money.



Pro-Line Series - Requires Accufast Eyes

TOTAL CONCEPT Series Mannikins

Accufast Eye Socket

3-N-1 Ear Butts page 48

Use Accufast eyes for this series - see page 50

A = 6 1/2 - 6 3/4" use 30mm eyes

A = 7 - 8 1/4" use 32mm eyes

Quick Find	Form Number	A	B	C	D	Turn	Head Type	Price
6 5/8	2038-AES	6 5/8	15	15 1/4	16 3/4	LT	AES	63.40
	2039-AES	6 5/8	15	15 1/4	16 3/4	RT	AES	63.40
7	2040-AEW	7	17 1/2	17 1/4	20	LT	AEW	66.95
	2041-AEW	7	17 1/2	17 1/4	20	RT	AEW	66.95
7 1/4	2042-AEC	7 1/4	19	18 1/4	23	LT	AEC	70.25
	2043-AEC	7 1/4	19	18 1/4	23	RT	AEC	70.25
7 1/2	2044-AEG	7 1/2	21	19 3/4	24 1/4	LT	AEG	72.75
	2045-AEG	7 1/2	21	19 3/4	24 1/4	RT	AEG	72.75
7 3/4	2046-AEK	7 3/4	22	21	25 1/2	LT	AEK	73.45
	2047-AEK	7 3/4	22	21	25 1/2	RT	AEK	73.45

Straight

Straight - Requires Round Eyes

TOTAL CONCEPT Series Mannikins

Round Eye Socket

3-N-1 Ear Butts page 48

Use round eyes for this series - see page 51

A = 6 1/2 - 6 3/4" use 30mm eyes

A = 7 - 8 1/4" use 32mm eyes

Form Number	A	B	C	D	Turn	Price
TS30A	7 1/8	18	17 1/2	21 1/4	STR	76.65
TS30B	7 1/4	19	18	22 1/2	STR	77.95
TS30C	7 1/2	21	19	24 1/2	STR	80.80
TS30D	7 3/4	23	20 3/4	27 1/8	STR	82.70
TS30E	8	25	22 1/2	29 1/2	STR	83.80



Semi-Upright Offset



FPO
new photo coming

Use Accufast eyes for
this series - see page 50

A = 6 1/2 - 6 3/4" use 30mm eyes
A = 7 - 8 1/4" use 32mm eyes

TOTAL CONCEPT: 3-N-1 Ear Butt Bases, Zero Clearance Eye Socket, Auto Antler Set, Nose Cleft
CLEFT P: Total Concept features except 3-N-1 Earbutts
ADVANCED TECHNOLOGY: Standard Head Type

Quick Find	Form Number	A	B	C	D	Turn	Head Type	Price
7 1/8	TA10A-TC	7 1/8	18	17 1/2	21 1/4	LT	Total Concept	74.50
	TA10B-TC	7 1/8	18	17 1/2	21 1/4	RT		74.50
7 1/4	TA16A-TC	7 1/4	19	18	22 1/2	LT		78.40
	TA16B-TC	7 1/4	19	18	22 1/2	RT		78.40
	TA14A-TC	7 1/4	20	18 5/8	23 1/2	LT		76.80
	TA14B-TC	7 1/4	20	18 5/8	23 1/2	RT		76.80
7 1/2	TA14C-TC	7 1/2	21	19	24 1/4	LT	Total Concept	78.50
	TA14D-TC	7 1/2	21	19	24 1/4	RT		78.50
	AA14E-J	7 1/2	22	20 1/4	25 3/4	LT	Advanced Technology	79.25
	AA14F-J	7 1/2	22	20 1/4	25 3/4	RT		79.25
7 3/4	TA18A-TC	7 3/4	23	20 3/4	27 1/8	LT	Total Concept	79.25
	TA18B-TC	7 3/4	23	20 3/4	27 1/8	RT		79.25
	AA18C-K	7 3/4	24	20 3/4	27 1/8	LT	Advanced Technology	80.30
	AA18D-K	7 3/4	24	20 3/4	27 1/8	RT		80.30
8	TA18E-TC	8	25	22 1/2	29 1/2	LT	Total Concept	81.05
	TA17A-TC	8	25	22 1/2	29 1/2	RT		81.05

Semi-Sneak Offset



FPO
new photo coming

Use Accufast eyes for
this series - see page 50

A = 6 1/2 - 6 3/4" use 30mm eyes
A = 7 - 8 1/4" use 32mm eyes

TOTAL CONCEPT: 3-N-1 Ear Butt Bases, Zero Clearance Eye Socket, Auto Antler Set, Nose Cleft
CLEFT P: Total Concept features except 3-N-1 Earbutts
ADVANCED TECHNOLOGY: Standard Head Type

Quick Find	Form Number	A	B	C	D	Turn	Head Type	Price
7 1/8	TA10A-TC	7 1/8	18	17 1/2	21 1/4	LT	Total Concept	74.50
	TA10B-TC	7 1/8	18	17 1/2	21 1/4	RT		74.50
7 1/4	TA16C-TC	7 1/4	19	18	22 1/2	LT		78.40
	TA16D-TC	7 1/4	19	18	22 1/2	RT		78.40
	TA13C-TC	7 1/4	20	18 5/8	23 1/2	LT		81.15
	TA13D-TC	7 1/4	20	18 5/8	23 1/2	RT		81.15
7 1/2	TA13E-TC	7 1/2	21	19	24 1/2	LT	Total Concept	81.95
	TA13F-TC	7 1/2	21	19	24 1/2	RT		81.95
	AA15A-J	7 1/2	22	20 1/4	25 3/4	LT	Advanced Technology	81.95
	AA15B-J	7 1/2	22	20 1/4	25 3/4	RT		81.95
7 3/4	TA15E-TC	7 3/4	23	20 3/4	27 1/8	LT	Total Concept	83.00
	TA15F-TC	7 3/4	23	20 3/4	27 1/8	RT		83.00
	AA17B-K	7 3/4	24	21 1/4	28 3/8	LT	Advanced Technology	83.70
	AA17C-K	7 3/4	24	21 1/4	28 3/8	RT		83.70
8	TA17D-TC	8	25	22 1/2	29 1/2	LT	Total Concept	84.10
	TA17E-TC	8	25	22 1/2	29	RT		84.10

Custom Techno Option Replacement Faces

Item Number	Face Letter	Nose to Eye	Description	Price
F-M	M	6 3/4	Standard Face - Narrower face than the A	18.80
F-A	A	6 7/8	Southern Petite	18.80
F-B	B	7	Southern	18.80
F-E	E	7	Northern Mature - Double Dewlaps - Disched Forehead	23.60
F-C	C	7 1/4	Southern Petite	25.15
F-I	I	7 1/4	Standard Face - Northern	18.80
F-D	D	7 1/4	Muledeer - Roman Nosed	18.80
F-J	J	7 1/2	Standard Face Northern	18.80
F-N	N	7 1/2	Standard Face - With deeper Jaw	18.80
F-F	F	7 1/2	Northern Mature - Double Dewlaps	21.95
F-K	K	7 3/4	Standard Face - Northern	18.80
F-G	G	7 3/4	Northern Mature - Broader Faced - Double Dewlaps - Disched Forehead	25.15
F-L	L	8	Standard Face - Northern	18.80
F-H	H	8	Broader Faced - Double Dewlaps	21.95

Head	Eye to Nose	STANDARD HEADS
I	7 1/4	
J	7 1/2	
K	7 3/4	
L	8	

Standard Head automatically comes on the form.

How To Change Out Our Replacement Faces



Questions concerning the replacement face?

Call our taxidermist technical support team at 1-800-279-7985



BEAVER CUT

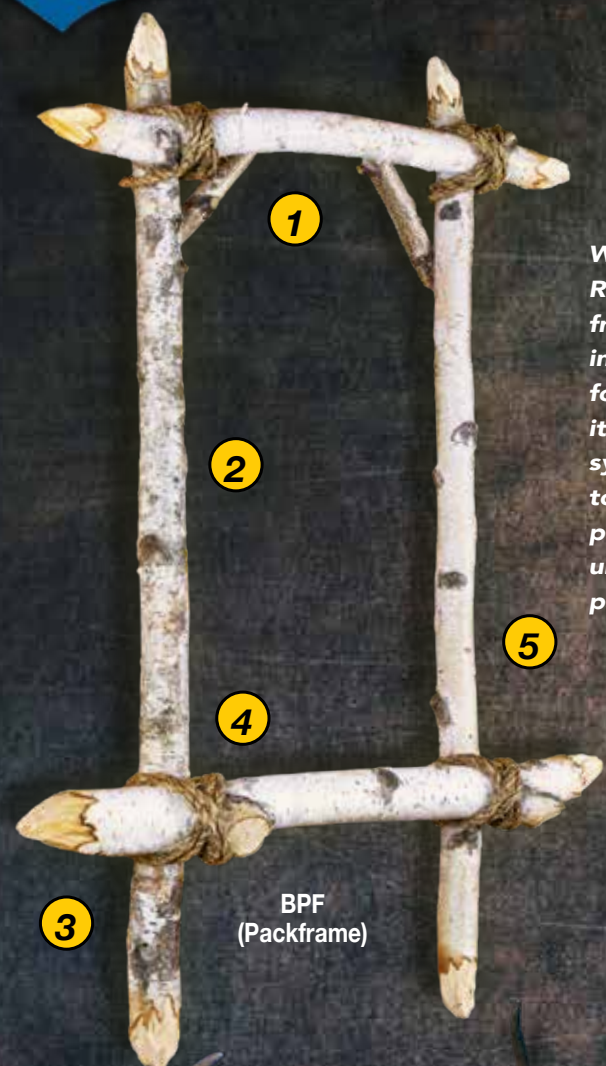
Birch Packframes

Real Birch Wood Packframes

We are excited to offer the Beaver Cut Birch Frames only from Revolution. Our packframes are made from real wood, taken from the rich woods of northern Wisconsin. Created with original, quality craftsmanship, detailed and exclusive designs, we focused on what makes the frame look good and what makes it sturdy. Each frame is gusseted for a natural looking support system that shows off the "x" shaped roping. To add the final touch, the "Beaver Cuts". This term is referring to the cut ends pictured on the frame. Our birch frames are truly beautiful and unique. We couldn't be more proud of how well our frames pair with the Revolution Deer and Bear Packmounts.

Birch Packframe Features

1. Original and unique-no two are alike
2. Real northeast Wisconsin birch
3. Beaver cut ends
4. Rope tied and birch gusseted
5. ALL NATURAL - No preservatives or poly build
6. Birch wood is harvested from the wild forests where the wildlife lives.



Item Number	Description	Price
BPF	Birch Frame 29 (L) x 22 (W) x 6 (D)	69.00
FRAME-ROPE	Frame Rope - 10 Feet Length	4.00

Beaver Deer Packmounts

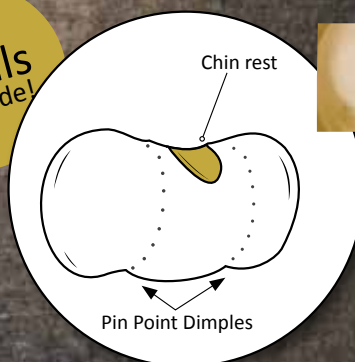
The Revolution Deer Packmount is available in four different sizes, with nose to eye measurements ranging from 7 1/4" to 8".

Mounted by
Dan Clarke
Vaughn, MT

Deer Packmounts | 4 different size heads



Get
2 rolls
per hide!



There is a full piece of wood across the back of the hide roll, which allows more area to staple the hide to, and attach to the frame.



Why use a hide roll compared to just rolling up the hide?

Attachment: The hide gets stapled to wood, then gets screwed to the Packframe.

Security: A limp rolled-up hide will shift over time and tend to flatten unnaturally.

Consistency: Being able to "wire spike" through the foam head into the foam hide roll allows versatility of head angle and a consistent, strong attachment.

Appearance: The result of the above advantages results in a better looking, stronger mount for the customer.

Item Number	A x B	Price
PKMT7.25	7 1/4 x 19	28.50
PKMT7.5	7 1/2 x 21	29.00
PKMT7.75	7 3/4 x 23	30.00
PKMT8	8 x 25	39.40
PKMT-ROPE	25' Twisted Manilla Rope (17' for roll , 8' for antlers)	8.50
PMRP	Hide Roll Pillow - 9 (L) x 17 (W) x 6 (D)	39.40
BPF	Birch Frame - 29 (L) x 22 (W) x 6 (D)	69.00

Beavercut Skull & Antler Frames

Skull & Antler Frames

This combination of both the packmount and the skull & antler frame has received many "Wow, that's cool" comments. Mount a bear combo for your display room - we think it will be the most positively commented mount in your shop!

Item Number	Description	Price
ARF	Birch Antler Rack Frame	69.00
PKMT-ROPE	25' Twisted Manilla Rope (17' for roll, 8' for antlers)	8.50



Wall Pedestal Trophy n' Stride

.....

This is a half mount and a wall pedestal created off the "Last Chance with a relaxed flowing motion. If your skin is cut short you can utilize the Habitat Foam Bases (HFB) to create a snow scene that will cover a portion of the lower leg that was cut off. The presentation of this trophy N' Stride mannikin is sure to get a positive response from hunters and taxidermists alike!

.....



Use round eyes for this series - see page 51

A = 6 1/2 - 6 3/4" use 30mm eyes

A = 7 - 8 1/4" use 32mm eyes

Habitat Foam Base

HFB Price98.20

*Base is shown finished here.
HFB is sold unfinished.*

Wall Pedestal Trophy n' Stride

FOLLOW THESE EASY STEPS WHEN PLACING YOUR ORDER:

Step 1: Choose the size form you need (for example: LLTS10).

Step 2: Choose the head you want, without or with ear butts (for example: LLTS10-AEC)

Step 3: Order the form (for example: LLTS10-AEC)

Quick Find	Partial Form Number	A	B	C	D	Turn	Custom Techno Head Options (suffix)	Price without Ear Butts	Custom Techno Heads with Ear Butts (suffix)	Price with Ear Butts
7 1/4	LLTS10	7 1/4	19	18	22 1/2	RT	A, B, C, E, I	265.35	EU, EV, EW, EX, EA, EB, EC, ED, AEC, AEW	273.10
7 1/2	LLTS11	7 1/2	21	19	24 1/2	RT	F, J, N	298.75	EE, EF, EG, EH, AEG, MEA	306.50
7 3/4	LLTS12	7 3/4	23	20 3/4	27 1/8	RT	D, G, K, P	325.45	EI, EJ, EK, EL, AEK	333.20
8	LLTS13	8	25	22	29 1/2	RT	H, L	352.15	N/A	---

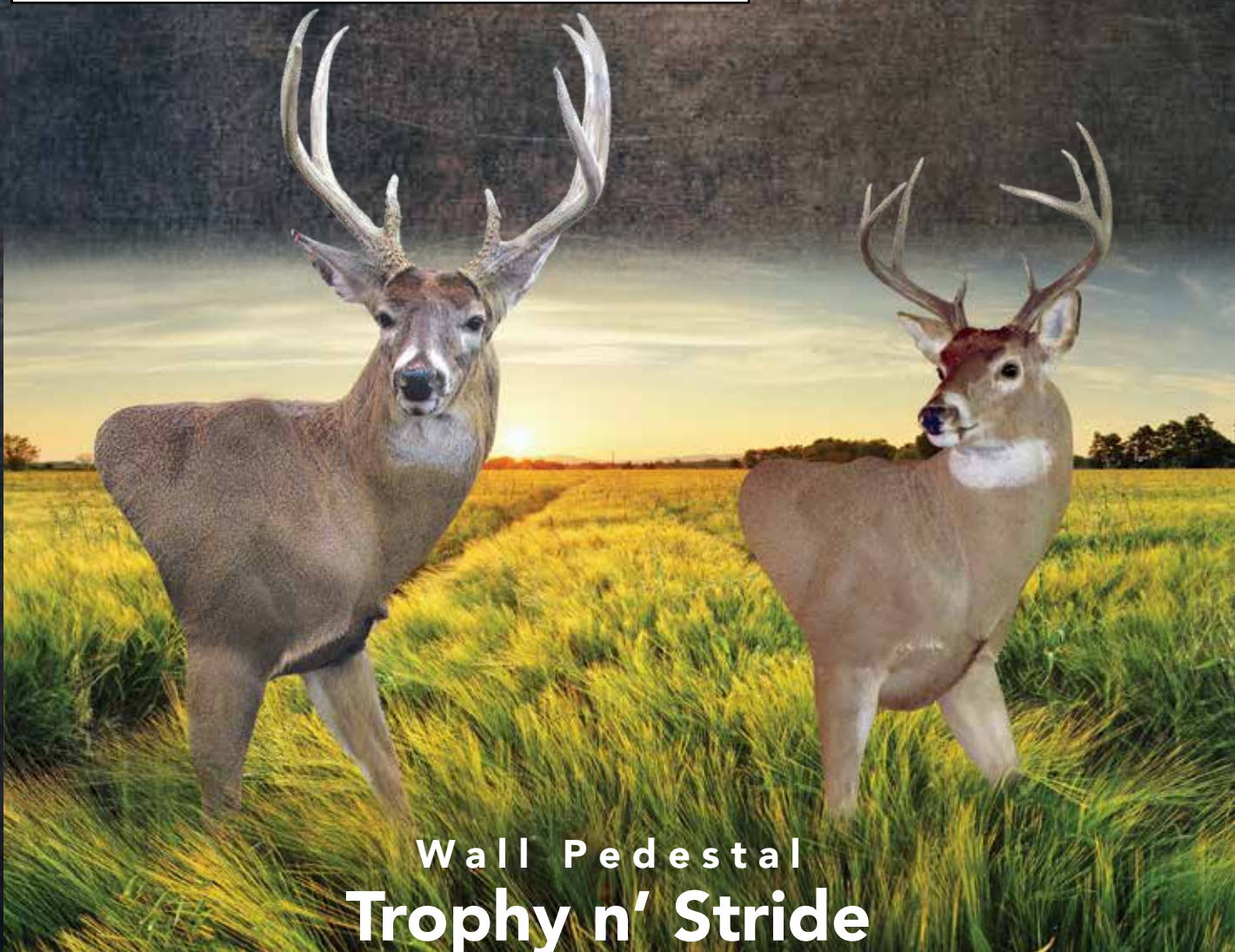
TOTAL CONCEPT: 3-N-1 Ear Butt Bases, Zero Clearance Eye Socket, Auto Antler Set, Nose Cleft

3-N-1 Ear Butts see page 48

Use round eyes for this series - see page 51

A = 6 1/2 - 6 3/4" use 30mm eyes

A = 7 - 8 1/4" use 32mm eyes



Wall Pedestal Trophy n' Stride

HUNTER'S 1/2 MOUNT

MANNIKINS

Use round eyes for this series - see page 51

A = 6 1/2 - 6 3/4" use 30mm eyes

A = 7 - 8 1/4" use 32mm eyes



Standard leg length of
a Revolution mannikin.

A

The leg length of the Hunter's 1/2 Mount.



B

Side view showing Hunter's
1/2 Mount with legs flat to
wall. Notice that the hooves
stay close to wall, which
means you can make a small-
er base.



Close up view of shoulder-
brisket-arm pit and legs.



C

Notice the anatomical detail
of the mannikin that shows
through on the legs in the
finished mount. You can see the
veins and knobby knees of this
long faced Northern deer.

3
FEATURES

OF THE
HUNTER'S 1/2 MOUNT

Hunter's 1/2 Mount

The Hunter's 1/2 mount has several features that make it unique. One of the main ones is that for a 1/2 life size, it doesn't stick out from the wall as far because the back of the leg has been cut off eliminating the need to sew up the back of the leg. This will speed up the mounting process. You can glue or staple the skin around the back much like you would a standard shoulder mount.



Mounted with
AEK head with form number
LLHH53, Accufast eyes,
Ultimate-Pro ear butts on
HFB Base (sold unfinished).

Habitat Foam Base

HFB Price98.20

Base is shown finished here.
HFB is sold unfinished.



LLHH50-TC
6 5/8 x 15 x 16 1/2

FOLLOW THESE EASY STEPS WHEN PLACING YOUR ORDER:

Step 1: Choose the size form you need (for example: LLHH51).

Step 2: Choose the head you want, without or with ear butts (for example: LLHH51-AEC)

Step 3: Order the form (for example: LLHH51-AEC)

TOTAL CONCEPT: 3-N-1 Ear Butt Bases, Zero Clearance Eye Socket, Auto Antler Set, Nose Cleft

3-N-1 Ear Butts see page 48

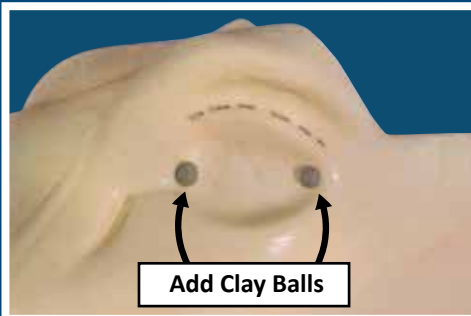
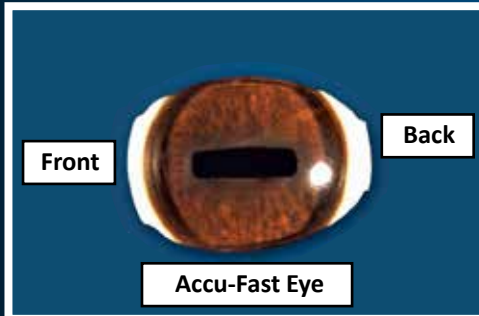
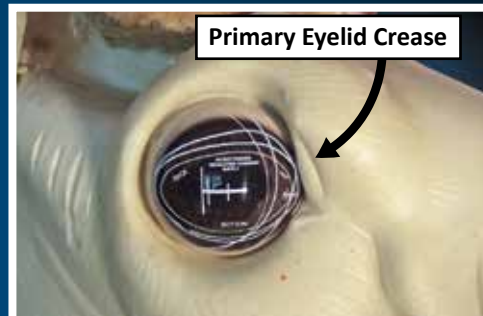
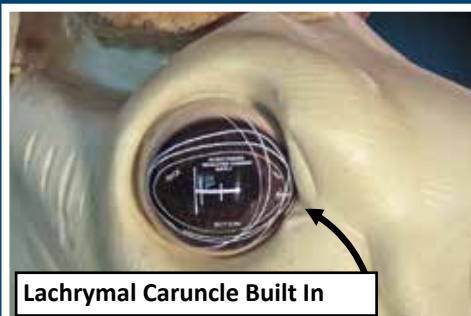
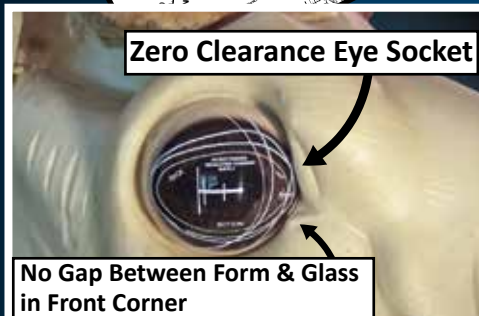
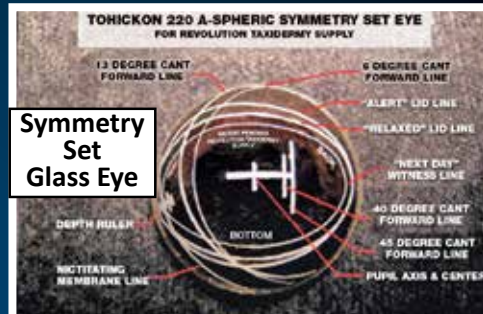
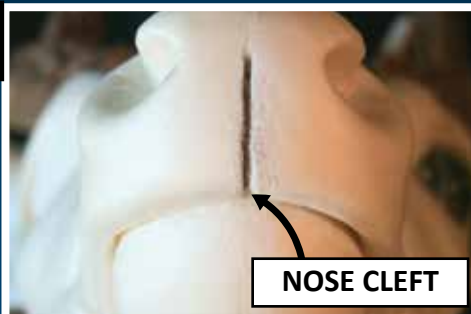
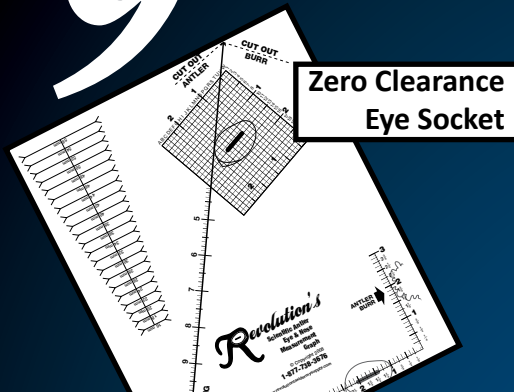
Use round eyes for this series - see page 51

A = 6 1/2 - 6 3/4" use 30mm eyes

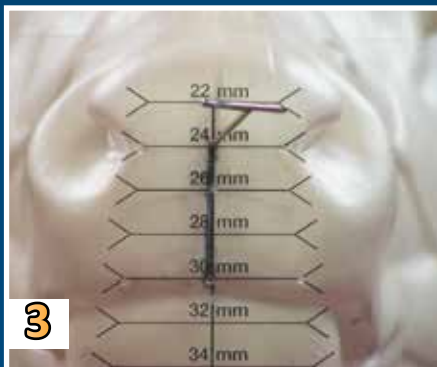
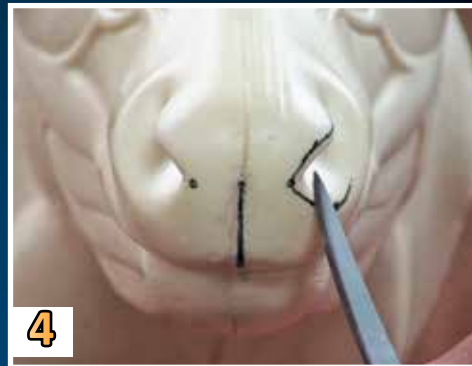
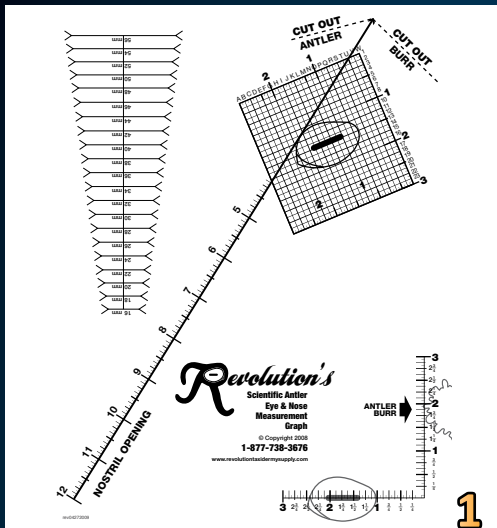
A = 7 - 8 1/4" use 32mm eyes

Quick Find	Partial Form Number	A	B	C	D	Turn	Custom Techno Head Options (suffix)	Price without Ear Butts	Custom Techno Head Options with Ear Butts	Price with Ear Butts
6 5/8	LLHH50-TC	6 5/8	15	15	16 1/2	LT	Total Concept	174.70	N/A	---
7 1/4	LLHH51	7 1/4	19	18	22 3/4	LT	A, B, C, E, I	201.15	EU, EV, EW, EX, EA, EB, EC, ED, AEC, AEW	208.90
7 1/2	LLHH52	7 1/2	21	19	24 1/2	LT	F, J, N	227.60	EE, EF, EG, EH, AEG, MEA	235.35
7 3/4	LLHH53	7 3/4	22	20 1/2	25 1/2	LT	D, G, K, P	254.05	EI, EJ, EK, EL, AEK	261.80
8	LLHH54	8	25	22	29 1/2	LT	H, L	280.50	N/A	---

9 "New & Exclusive" Time Saving Features



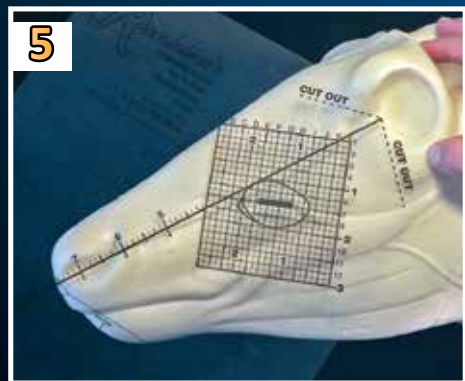
Scientific Antler, Eye & Nose Measurement Graph



The graph is designed to quickly and accurately measure your nostril opening, nose-to-eye and antler location. To measure the nostril opening width simply adjust the transparent graph V nostril corners so that they match the deer. (photo #2) You don't need calipers or rulers; the graph does it for you. Next, place the center line of the nose graph on the center line of the forms built-in nostril crease at your pre-recorded measurement and pin the graph to the form. (photo #3) Then pin prick through the graph at your nostril corner measurement. You should now have two pin sized holes perfectly symmetric exactly

the size of your deer cape. (photo #4) You can then trim the form to the pinprick holes and your cape will fit perfect without having to test fit (remember, measure twice, cut once). If your form's nose is too small, simply build up to the measurements. The graph also acts as

a transparent ruler to measure the nose to the eye. (photo #5) Now the main purpose of the graph is to measure exactly where the antlers should be. It is common to measure from the end of the nose. The problem is that your form's nose-to-ear is not going to be the same as the actual deer. This linear measurement does not take into account the height radius. The main measurements should be from the back corner of the eye. When I was a production taxidermist, I used the two-to-three finger technique. While this works, it still doesn't take into account the height radius. The graph will give you both horizontal and vertical alignment. Simply place the antler burr arrow at the middle of the antler burr. Rotate the graph so that the nos-



tril opening line is in the middle of the nostril opening. Record where the horizontal letter measurement intersects with the vertical number measurement. (photo #6). Next put the tee pin through the graph at the pre-recorded eye intersection and pin the graph to the form at the rear

of the eye. Pivot the graph so that the nostril opening line is lined up with the middle of the nostril opening and pin in place. You now have the graph held in place with your hands free to attach the antlers so they line up with the antler burr arrow.

It is a nice feeling to know that everything will fit because you accurately measured. In carpentry there are rough carpenters, which work fast, and trim carpenters, which work towards perfection. The graph can help you get trim carpenter quality in rough carpenter time.

Nose Cleft

The nose cleft is one of those ideas that looks simple and unassuming but actually does work. The nose cleft is a straight line indentation centered down the middle of the nose. (photo #1) Believe it or not it gives you three advantages over the form using you're using now. First the line of the graph, lines up with the centerline of the form (nose cleft) to help you achieve a perfect symmetrical nose skin fit. (see previous page)



Second it gives perfect symmetric alignment on of your lower nose skin. Before you tuck your upper lip you will see a line or cleft in the bottom of your nose skin. This fits or aligns with the form's nose cleft in the bottom of the nose. You can feel the cleft in the form easily when the cleft in the cape aligns with it. This automatically centers your nose perfectly. Now after the skin has been aligned and the lip tucked there is one simple little trick you can do to add a little extra to your mount. Take your lip tucking tool and slightly press it into the nose crease. This will accent and enhance the nose crease giving the little "V" that the live deer has. (photo #2)



Taxidermy Tip

If you pull your cape widthwise, it will pull your brisket up and shorten your neck length. This will help you fit your cape better and make your neck look larger. The neck will look larger because your hair will be "bunched" and not stressed. Your cape will fit better because the neck increases in circumference the closer it gets to the shoulder.

The deer we shoot are either carried out or dragged by their rear legs, never their antlers. We then can take their carcass casts and measurements of deer that have not been stretched. It may help, and it certainly won't hurt when salting your cape, to stretch them wide, not long. Then hang them widthwise not by their heads, or lengthwise. If the Cape is stretched long you will have trouble sewing from the middle to over the shoulders.

3-N-1 Ear Butt System on Another Form

Can I use the 3-n-1 Ear Butt system on any deer form? Yes, with a little modification to the back of the antlers slot.

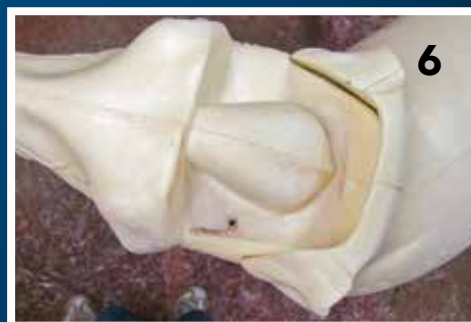
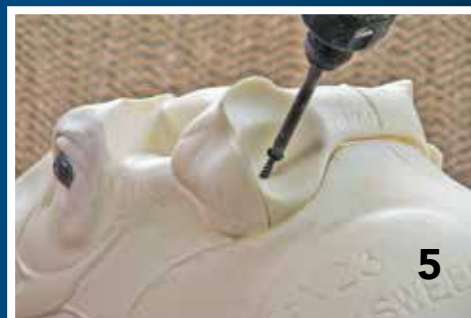
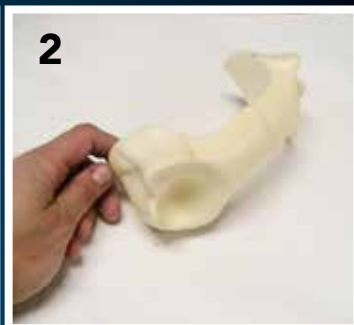
First choose the right size ear butts. Next, let's do a little demonstration so you can see how good that our ear butt system works. Place the ear butts on the skull so they "sit" the way you want them! (Photo #1) Hint- a little hot melt glue will temporarily hold them. Remember, on the live deer the ear butts are commonly tight to the back of the antler burrs. This is more true the larger the deer. Notice that however you tilt or move the antlers the ear butts stay perfect in relation to the antlers.

Trace your ear butts on the skull with a sharpie. This will act as an alignment mark when you actually attach them permanently to the antlers. Cut on the lines with a Sawzall (or similar tool) so that the blades come out at the bottom of the forms ear butt. (Photo #2) attach your antlers to the foam as normal. Next, you can simply attach the ear butts to the antlers with hot melt glue and then to the form with a screw in each ear. When you mache or clay your antlers just fill any gap between the ear butts and the form.

3-N-1 Ear Butt System

The 3-n-1 Ear Butt system is designed for the professional taxidermist. It is very fast and accurate. What are the advantages?

- 1.** Your ear butts just "instantly" set in their slots, hands free; a simple 1" screw in each side and they're set to go.
- 2.** Both sides are symmetrical with each other and all axes.
- 3.** The rear of your skull is automatically sculpted in place.
- 4.** The outside shape of your ear butts are sculpted for you. They will not mash or distort like clay.
- 5.** The inside has enough play or wiggle room for you to adjust the position of your ears the way you want them. Note: most all other ear butts "lock you in" and restrict your flexibility. Use clay on the inside of your ear butt to hold the ear liner in place. You will be surprised how solid the ears are with this system.
- 6.** The ear butts are made of standard taxidermy foam so they can be easily cut, rasped, or sanded. Traditional plastic ear butts don't allow this.
- 7.** The 3-N-1 ear butts consists of both right and left ear but held together in one unit by the back of the head. Hence the name "3-N-1".



Head Size	Ears Back	Ears Forward	Price per pair
6 7/8"	EBS	EFS	9.26
7"	EBS	EFS	9.26
4 1/4"	EBS	EFS	9.26
7 1/2"	EBMD	EFMD	9.26
7 3/4"	EBMDL	EFMDL	9.26
8"	EBLG	EFLG	9.26

Automatic Antler Support & Mannikin Antler Gauge



**SIDE VIEW OF AUTO
ANTLER SUPPORT**



**TOP VIEW OF AUTO
ANTLER**



**REAR VIEW OF AUTO
ANTLER**

The Auto Antlers Set is the fastest and easiest way there is to set antlers. Brian Johnson invented the auto antler set in 1988 and it was marketed through Rinehart Taxidermy Supply. He called it the "Brain Ridge".

The artificial brain (Auto Antler Set) supports the antlers from the inside of the brain cavity-not at the outside rim of the skull plate. No shims are needed to balance the antlers. The antlers are easily centered and supported from the inside. The auto antlers support really pays for itself (actually it's free) with antlers that are cut crooked or ones that are broken in two pieces. The secret is that the skull plate is cut so that it doesn't touch the head blocks slot when setting on the Auto Antler support. You can use Bondo, hot glue or even clay to help hold them "hands free" before screwing down with four 3" screws. We also added a mannikin "antler gauge" right behind the eyes. The lines represent $\frac{1}{4}$ " increments starting at $\frac{3}{4}$ " from behind the rear corner of the eye. Before skinning the deer, record how far back the front of the antler burr is behind the eye. Simply place the antler skull on the Auto Antler support and adjust until the front of the burr lines up with a pre-recorded measurements on the mannikin "antler gauge".

"I at first didn't want to use the new Auto Antler Set on the Total Concept System forms, then I decided to try it and it works great, really saves time and saves the cost of materials I normally would use to build up the antlers." BOXIE KALLINA, TX.



**FORM WITHOUT AUTO
ANTLER SET AND ANTLERS
SHOWN HOW THEY DON'T
FIT FORM**



**ANTLERS SET ON OF
AUTO ANTLE SET**



**BUILT IN MANNIKIN
ANTLER GAUGE**

Accufast Eyes

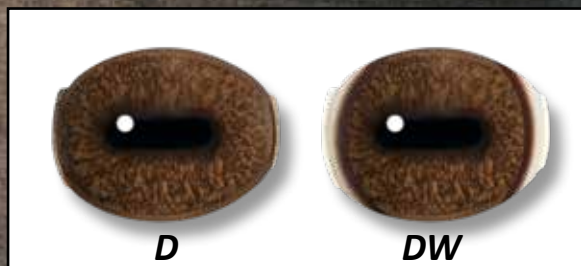
The Accufast Eye Setting System is designed for the production taxidermist. Brian Johnson invented the pre-set eye and believe that Accu-Fast is not only faster but has numerous advantages over pre-set eyes. The pre-set eye has one expression-alert. Accufast, since you do use a small roll of clay, allows you to create your desired expression. The Accufast Eye System allows you to tuck your eyelids where you can't with the pre-set. Pre-set eyes tend to move and distort in the manufacturing process giving inconsistent results. Accufast Eyes are "post-set" meaning you get flawless consistency.



Details showing the consistent life-like accuracy of the patented AccuFast Eye Set. Notice how fast the process is, as well as giving total freedom of expression to the individual taxidermist.

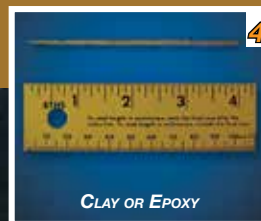
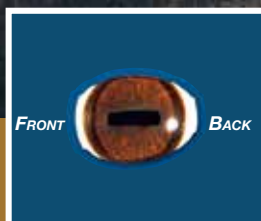
Item #	Color	Price (pr)
M	Medium	18.95
MW	Med., White - Front & Back	18.95
MWB	Medium, White - Back	18.95
MWF	Medium, White - Front	17.95
D	Dark	18.95
DW	Dark, White - Front & Back	18.95
DWB	Dark, White - Back	18.95
DWF	Dark, White - front	18.95

Note: All Accufast forms are special order so order early!



Only Revolution offers the fastest, most accurate eye setting process in the HISTORY OF TAXIDERMY.

The Process



Round Eye Socket

The symmetry set eyes will save you eye setting time and increase your consistency and quality. The guide lines offer you both alert and relaxed up expressions. There is a built in ruler in the eye corner for depth and 6° & 12° cant down options as well as 40° & 45° angle forward. If you're not using these eyes you're probably riding a horse to work.

NOTE: To remove Symmetry lines use acetone or scrape off.

220MED32



Old Order No.
220M

220DK32



Old Order No.
220D

400-M32



Old Order No.
400M

400-D32



Old Order No.
400D

400-OPD32



Old Order No.
400OPD

400-OPM32



Old Order No.
400OPM

400-PRD32



Old Order No.
400PRD

400-PRM32



Old Order No.
400PRM

425-OPD32



Old Order No.
425OPD

425-OPM32



Old Order No.
425OPM

425-PRD32



Old Order No.
425PRD

425-PRM32



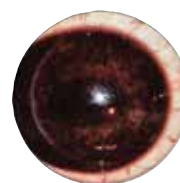
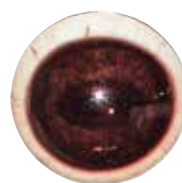
Old Order No.
425PRM

650XB



Old Order No.
650XB

**#425 Quantum VX
with Veining**



Symmetry Set Eye

THE WORLD'S MOST ACCURATE EYE SET

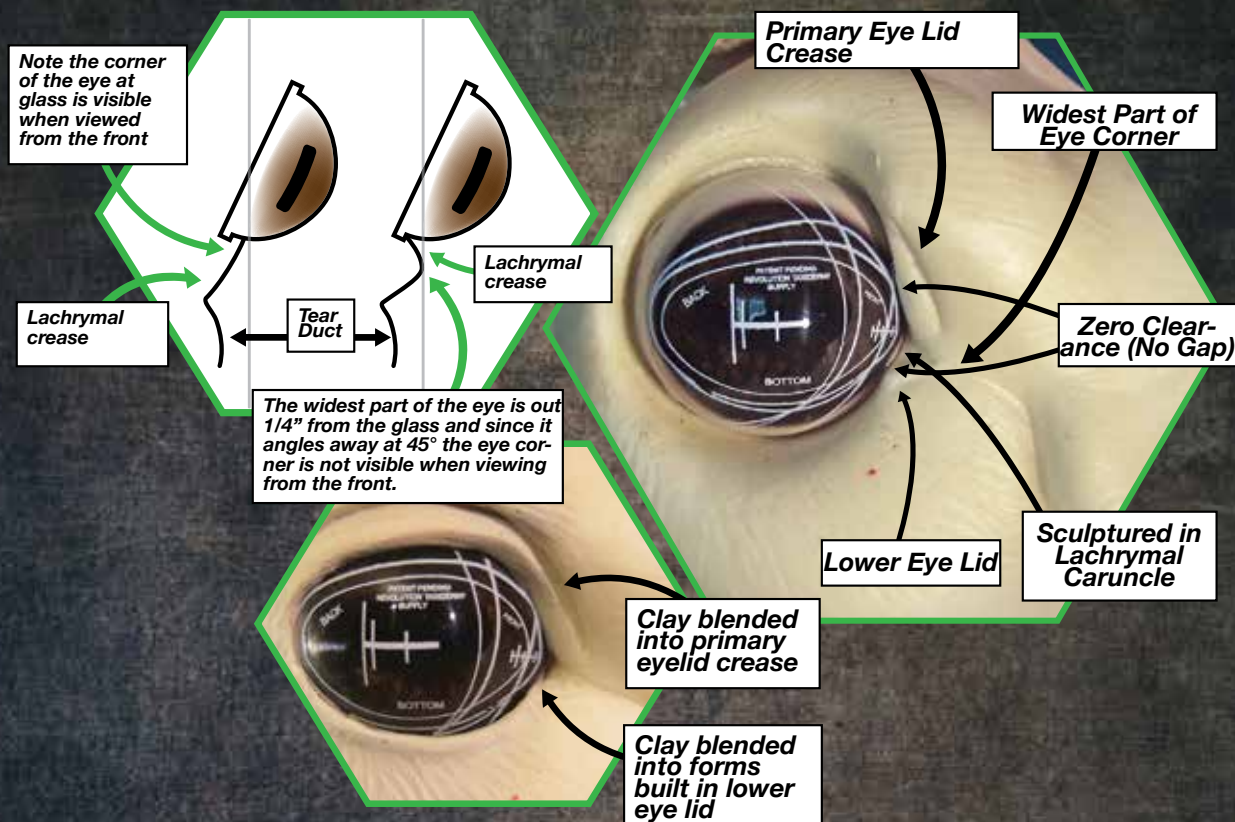
QUANTUM-VX
Prestige

Eye Size	Item Number without Symmetry Lines	Price (pair)	Item No. with Symmetry Lines	Price (pair)
32 mm	I220WT	15.50	I220WT-SS	17.50
32 mm	220MED32	15.50	220MED32-SS	17.50
30 mm	I215WT	15.50	I215WT-SS	17.50
30 mm	215MED30	15.50	215MED30-SS	17.50
34 mm	I34WTJM	22.20	I34WTJM-SS	24.40
32 mm	I32WTJM	20.35	I32WTJM-SS	22.35
30 mm	I30WTJM	20.35	I30WTJM-SS	22.35
34 mm	I225EK	15.50	I225EK-SS	17.50
36 mm	I230EK	15.50	I230EK-SS	17.50
38 mm	I240EK	15.50	I240EK-SS	17.50

Size	Item Number without Symmetry Lines	Price (pair)	Item Number with Symmetry Lines	Price (pair)
32 mm	400-M32	10.40	400-M32-SS	15.20
32 mm	400-D32	10.40	400-D32-SS	15.20
32 mm	400-OPD32	11.75	400-OPD32-SS	16.50
32 mm	400-PRD32	11.75	400-PRD32-SS	16.50
32 mm	400-OPM32	11.75	400-OPM32-SS	16.50
32 mm	400-PRM32	11.75	400-PRM32-SS	16.50
32 mm	425-OPD32	14.10	425-OPD32-SS	18.75
32 mm	425-PRD32	14.10	425-PRD32-SS	18.75
32 mm	425-OPM32	14.10	425-OPM32-SS	18.75
32 mm	425-PRM32	14.10	425-PRM32-SS	18.75

Round Eye Socket

Zero Clearance Eye Socket



The zero clearance eye socket has three distinct features built into the mannikin designed to save time and to add anatomical quality to make a better mount.

First, "zero clearance" means the glass eye fits tight against the front corner of the socket with virtually no gap. Second, if you look at the bottom corner of the eye socket, you will see a sculpted Lachrymal caruncle. Third is a primary eye lid crease.

By not having to add any clay to your eye corner, you get absolutely no shrinkage, distortion or mashing of the clay the Lachrymal caruncle that is built in allows you to add a feature that your competition doesn't have plus your deer will look better. If you look at a live deer from the front view you will not be able to see the corner of his eye. Approximately 1/4" from the eye the Lachrymal skin angles in at about 45°. Now, looking at typically mounted deer you will be able to see the front corner where the skin touches the glass, which is incorrect. If you wanted to put this feature in your mounts now, using your present forms and clay, it would be extremely difficult. Competition taxidermists will sculpt this feature in using Sculpt-All and let it harden. We have done that for you and built it in with foam which will not distort. By having the eye fit tight up against the caruncle (zero clearance), you will be amazed at how quickly you can achieve competition quality on your commercial mounts. We also added the primary eye lid crease into the upper swell so you can blend your clay fast and accurately on both eyes. Revolution is trying to raise the quality of taxidermy for the hunter and profit for the taxidermist.

..... BEAR

Today mount featured on the cover of
TAXIDERMY
MOUNT BY
**SCOTT
HARLOW**
FORM: BL2



This picture of the Cliff Bear is featured at the Cabela's in Sun Prairie, WI.



Today's mount featured on the cover of
MOUNT BY
SCOTT HARLOW
FORM: BL2

THE CLIFF BEAR

Mounted with
Form # BL2
(5 3/4 X 26 X 51 X 69)
Mounted by:
Brian Johnson



CLIFF BEAR

Order#	A	B	C	D	Price
BL12	4 3/8	18	36 1/2	49 1/2	\$521.05
BL11	5 1/8	22 1/2	41	57	\$584.45
BL17	5 1/2	23 3/4	46	61 1/2	\$643.40
BL2	5 3/4	26	51	69	\$724.50

The "Cliff Bear" comes from our own family hunting trip to Cliff Lake, Ontario, Canada. Shot, captured, sculpted and mounted by Sculptor and Founder Brian Johnson.



HALF WALKING BEARS



BH14
5 1/4 x 21 x 42



BH14
5 1/4 x 21 x 42



BH15
5 1/2 x 23 x 46



BH15
5 1/2 x 23 x 46



BH14
5 1/4 x 21 x 42



BH16
5 3/4 x 25 x 50



BH15
5 1/2 x 23 x 46



BH14
5 1/4 x 21 x 42

HALF WALKING BEARS

BH13

4 3/4 X 17 1/2 X 35



BH16

5 3/4 x 25 x 50



BH14

5 1/4 x 21 x 42



BH14

5 1/4 x 21 x 42



BH14

5 1/4 x 21 x 42



BH13

4 3/4 X 17 1/2 X 35



HALF WALKING BEAR

Order#	Head	Neck	Girth	Turn	Price
BH13	4 3/4	17 1/2	35	RT	\$294.75
BH14	5 1/4	21	42	LT	\$329.40
BH15	5 1/2	23	46	LT	\$354.45
BH16	5 3/4	25	50	LT	\$383.60

HALF WALKING BEAR

ASCENDING UP HILL, ONE PAW UP

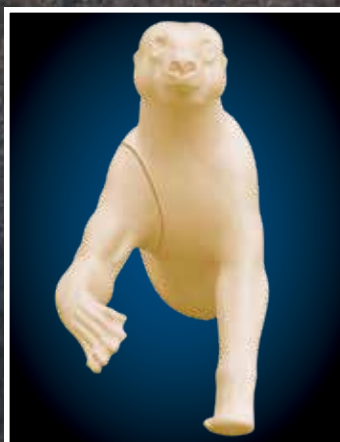
As you can see we have two half walking bears. The first one was introduced in 2009. It has both feet on the ground and its head looking up. This gives the customer the option of hanging the bear close to the floor and yet the head is looking up since the bear is low. It can even be mounted without rods and no base so that it looks like it is coming out of the wall and walking on carpet. In 2010 we introduced our second walking bear. They are walking at a 25 degree incline. One of the front legs is lifted off the ground in stride. The head is angled down to compensate for the body angling up. The head and neck are also raised in a more upright alert position. By angling the body up and lifting the neck and head it naturally shows more of the chest. If a particular bear has a unique white blaze this position is designed to accent it.

Taxidermy Tip. We advise you to ask the customer how high on the wall they are planning on putting their bear. You can then change the angle of the head to match his height. It is common to see mounted bears that are looking over your head or down at your feet. You want that eye to eye contact. We designed our bears to have a mature, masculine leg posture.



BH17

4 3/4 x 17 1/2 x 35



BH18

5 1/4 x 21 x 40



BH19 5 1/2 X 22 X 46

HALF WALKING BEAR

ASCENDING UP HILL, ONE PAW UP

Order#	Head	Neck	Girth	Turn	Price
BH17	4 3/4	17 1/2	35	LT	\$294.75
BH18	5 1/4	21	40	LT	\$330.05
BH19	5 1/2	22	46	RT	\$354.50
BH20	5 3/4	24 1/2	50	RT	\$383.60

BH20 5 3/4 X 24 1/2 X 50



This is our version of probably the most common position of mounted life size bears. We had 6 objectives that we wanted to accomplish to separate our bears from the pack. The first was anatomy. I live in Bear Country in Northern Wisconsin. Through my local game warden I have been able to purchase bears that have been either been illegally shot or ones that were shot because of crop damage. Note: we have an overpopulation of bears in Wisconsin, yet it takes 6 to 7 years to get a license. We have bears in spring on our porch tearing down our birdfeeders. We also have to have special "bear rods" on our dumpster to keep the bears out. As you probably know I am a chainsaw sculptor and keep chainsaw carving. The primary animals carved are black bears. By living in the woods around bears and studying them for carving, I have observed what I thought were flaws in the taxidermy industry concerning bears. Posture, attitude and expression were as important to me as the double dipped eye socket, nose, lip line and face profile. The second is skin fit. Bears are notorious for being a pain to mount because the forms never fit the skins. Bear sizes vary tremendously by sex and time of the year. Sows tend to be shorter yet stocky. Boars longer and leaner. I take individual bears and sculpt them as exactly as possible to their measurement. We are told after how well are bear forms fit. The third point is customer satisfaction. Ultimately the customer is both your boss and my boss. If he's not happy you're not happy and I won't be happy. Customers want their fish, deer and bear to look bigger than they actually were. "That can't be mine, mine was bigger than that." The dreaded words. I have observed that it is very common for people to exaggerate their bear weighs by 100 pounds. If I put the exact weights with my bears in the catalog I would be committing suicide. On my last bear hunt I asked my guide if we can weigh a bear that was just shot. "No, we don't want to do that", he said. We then can turn a 200 pound bear into a 350 pound bear real quick. A mounted bear looks larger while walking up hill more than he does walking on the level ground. He's lifting his neck and head up it shows off more of his chest.

By stretching his legs out in a walking stride it makes him longer which gives a larger appearance. Fourth is the ease of base making. Even though the bears are walking up, their feet are all on flat plane. You don't have to have to build up special blocks for each line. As you can see the pitch is about 25 degrees for this design. Fifth you can see that the bears can still walk on the flat ground if desired. We give you the option of the bear walking on all four feet or on three with one paw up. You would want to lift the head up if you chose to mount him on the level.

PS: I forgot the sixth objective. The older and larger the bear the more they tend to look bull legged and tough. In our local pizza restaurant the owner shot a 500 pound bear that looks closer to 200 pounds mounted. The front legs are tight together and look very effeminate. Our elbows are out wide, which gives the tough "wrestler stance" look. This last summer I saw in our backyard a very large bear. I immediately know he was big by his wide front leg stance. When they have the grizzly bear look you know they're big. - Brian Johnson

LIFESIZE WALKING BEAR

ASCENDING UP HILL AT 25°, ONE PAW UP

Order#	A	B	C	D	Turn	Price
BL13	4 3/4	17 1/2	35	47	LT	\$521.05
BL14	5 1/4	21	40	53	LT	\$584.45
BL15	5 1/2	23	46	55	RT	\$643.40
BL16	5 3/4	25	50	62	RT	\$709.75



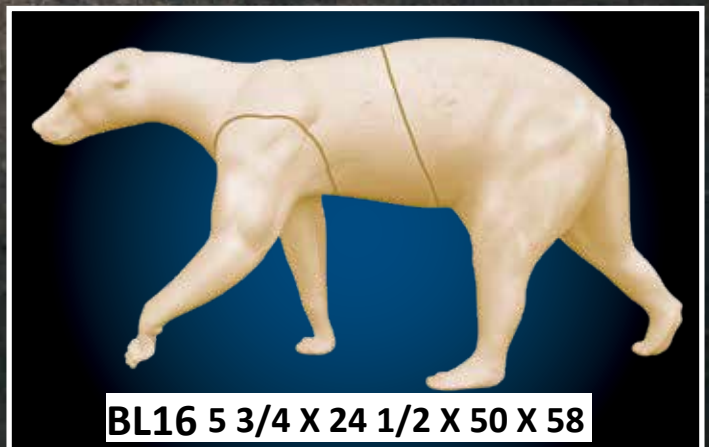
BL13 4 3/4 X 17 1/2 X 35 X 47



BL15 5 1/2 X 22 X 46 X 55

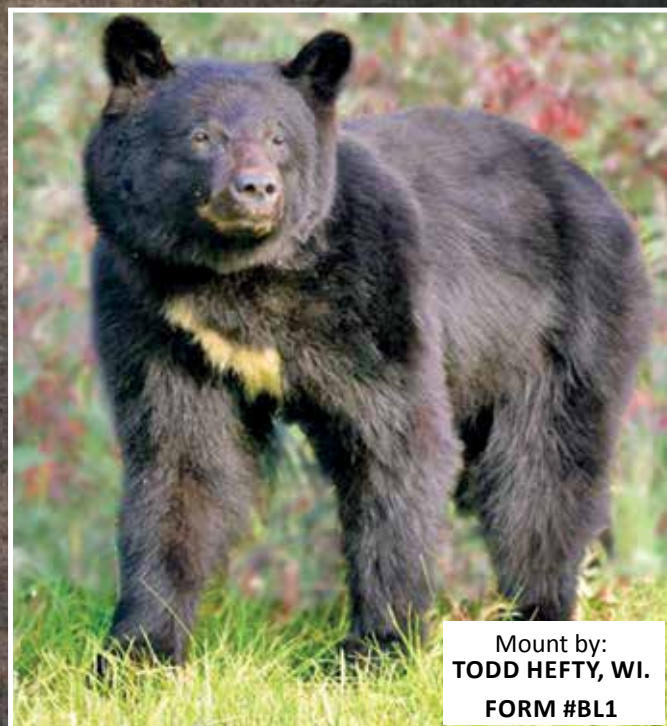
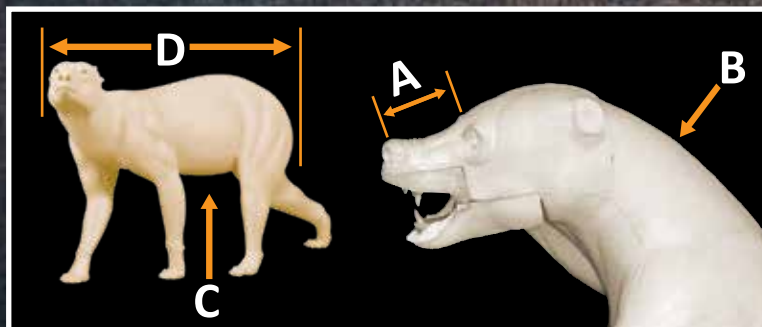
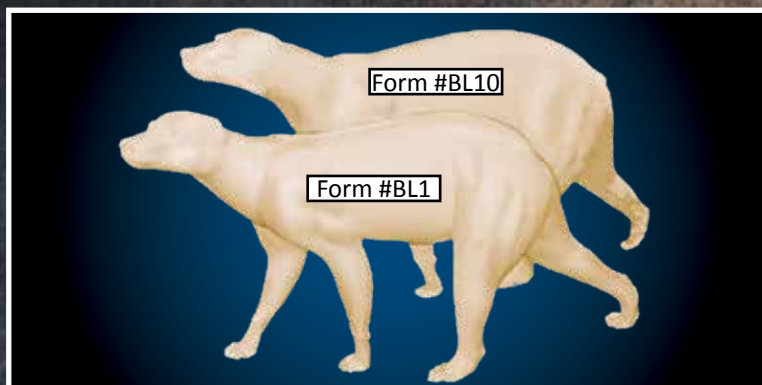


BL14 5 1/4 X 21 X 40 X 53



BL16 5 3/4 X 24 1/2 X 50 X 58

RELAXED WALKING BEAR



Mount by:
TODD HEFTY, WI.
FORM #BL1

RELAXED WALKING BEAR

Order#	A	B	C	D	Turn	Price
BLS7	4 3/4	17 1/2	35	47	RT	\$521.05
BL1	5 1/4	21	42	53	LT	\$584.45
BL9	5 1/2	23	46	55	LT	\$643.40
BL10	5 3/4	25	50	58	LT	\$709.75

Relaxed "Walking Bear"-Designed to walk on carpet with no need for a base, it balances perfectly!

Form #BL1 (5 1/4 X 21 X 42 X 53)

NOTE: FORMS WITHOUT RODS ARE SPECIAL ORDERED.



"CAUGHT YA" BEAR



ORDER#	A	B	C	D	PRICE
BL5	5 1/8	21 1/2	42	57 1/2	\$628.65

"I LOVED MY MOUNT ON YOUR 'CAUGHT YA BEAR' SO MUCH I WANTED TO KEEP IT FOR MYSELF. **THE FIT WAS DEAD ON.**"
DANNY WAHL, MO.



Mount by:
KATIE WILLARD, MT

STANDING TOUGH BEAR



Order#	A	B	C	D	Price
BL6	4 3/4	17 1/2	\$35.00	\$49.00	\$532.85
BL3	5 1/8	21 1/2	\$42.00	57 1/2	\$628.65
BL8	5 1/2	23 1/2	\$46.00	\$61.00	\$665.55

LAYING DOWN ALERT BEAR



Mount by:
JIM DYKSTRA, WI.

Order#	A	B	C	D	Price
BL4	5	17 1/2	35	48	\$521.05



"REVOLUTION BEAR FORMS ARE THE MOST
ACCURATE I'VE EVER USED."
JIM DYKSTRA, WI.

WALL PEDESTAL BEAR

45/90 BEAR



45/90 BEAR

Order#	Head	Neck	Girth	Turn	Price
B45/90-3	4 3/4	18 1/2	35	RT	\$294.75
B45/90-5	5 1/4	21	42	LT	\$329.40
B45/90-6	5 1/2	23 1/4	46	LT	\$354.45
B45/90-7	5 3/4	25 1/4	50	LT	\$383.60



Mount by:
JEFF CRAWFORD, PA.

NOTE: many of our bear arms are poured separate and not cut off. This is advantageous to the taxidermist in two ways. First they are designed to pivot very similar to the live bear. They pivot similar to "Barbie Doll" arms, allowing you to adjust them easily to your liking. Re-attachment is also faster and easier than cut off arms being poured separately is a stronger more dense foam. There is plywood (same as a deer head block) poured into the body. You can Bondo the arms and use screws with washers giving you an adhesive/mechanical bond. If you tube your arms when you skin the bear, you can pre-attach the foam arms with screws, back them out and use the screws for perfect alignment during the mounting process.



WALL PEDESTAL BEAR

Order#	A	B	C	D	Price
BWP10	5 1/4	22 1/2	36 1/2	41	\$312.90

THE SPY BEAR



Order#	Head	Neck	Girth	Price
SB6	5 1/8	21	42	\$323.00

LAST CHANCE

SHOULDER MOUNT BEAR



Order#	Head	Neck	Girth	Price
BS4	4 3/4	17 1/2	35	\$86.90



THE CHARGING BEAR

ORDER#	Head	Neck	Girth	Price
BCH3	4 1/2	16 1/2	31	\$292.65
BCH7	5 3/4	25	51	\$381.45

"I'VE MOUNTED SEVERAL BEARS ON YOUR CHARGING BEAR' FORM #BCH7. IT IS OUTSTANDING."

GARY LEONARDO

LEONARDO SCHOOL OF TAXIDERMY, WA.

TOHICKON BEAR EYES

Order Number	Price/Pair	Size
I710BR	\$15.25	10mm
I712BR	\$15.25	12mm
I714BR	\$15.60	14mm
I716BR	\$15.60	16mm
I718BR	\$16.20	18mm



BUCKEYE BEAR EARLINERS

ORDER#	Description	Price/Pair
BE2	Medium Bear Earliner	\$21.30
BE3	Large Bear Earliner	\$25.20



*Prices subject to change due to rising foam costs

BEAVERCUT

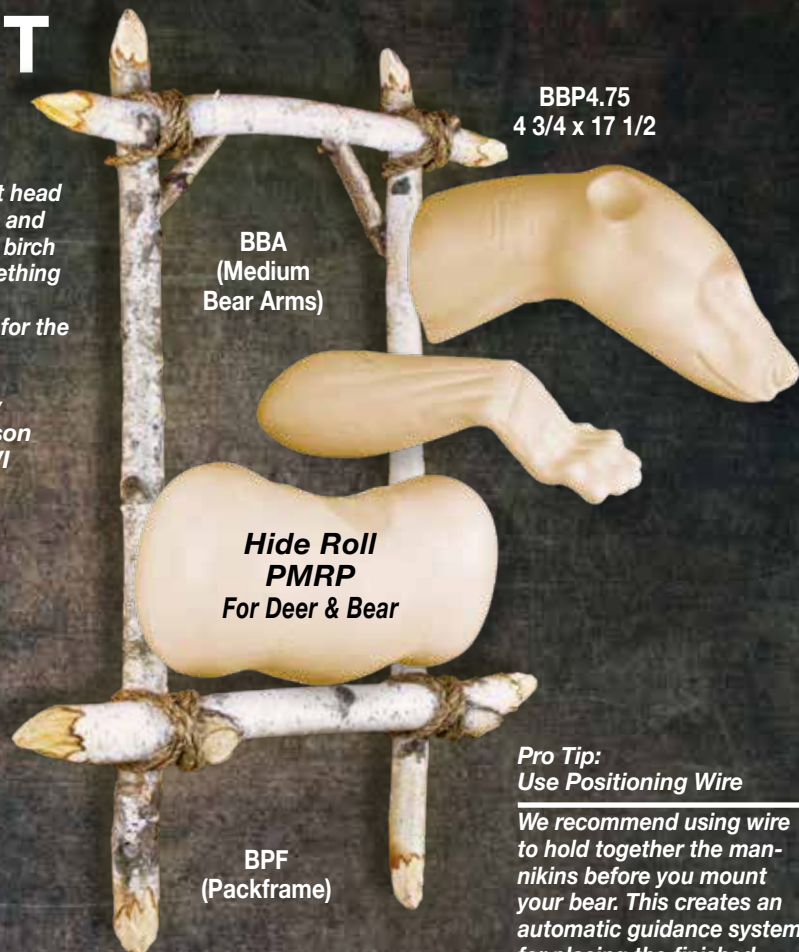
Bear Packmounts

Revolution offers the bear packmount system in four different head sizes. We went a step further by adding bear arms in medium and large sizes. Combining the head, arms, hide roll, and genuine birch frame will make your next item stand out for the "I want something different" customer.

The bear arms are specifically designed with a rounded back for the hide to wrap around for better transition to the wall.



Mounted by
Brian Johnson
Hayward, WI



BBP4.75
4 3/4 x 17 1/2

BBA
(Medium
Bear Arms)

Hide Roll
PMRP
For Deer & Bear

BPF
(Packframe)

Pro Tip:
Use Positioning Wire

We recommend using wire to hold together the mannikins before you mount your bear. This creates an automatic guidance system for placing the finished parts together. Being able to "wire spike" through the foam head into the foam hide roll allows versatility of head angle and a consistent, strengthened attachment.



BBP4.75
4.75 x 17.5

BBP5.25
5.25 x 21

BBP5.5
5.5 x 23.25

BBP5.75
5.75 x 25



Item Number	Description	Price
BBP4.75	Bear Head - 4 3/4" (A) x 17 1/2" (B)	28.00
BBP5.25	Bear Head - 5 1/4" (A) x 21" (B)	28.50
BBP5.5	Bear Head - 5 1/2" (A) x 23 1/4" (B)	29.00
BBP5.75	Bear Head - 5 3/4" (A) x 25" (B)	30.00
BPF	Birch Frame - 29" (L) x 22" (W) x 6" (D)	69.00
BBA	Black Bear Arms (Medium)	30.00
BBAL	Black Bear Arm (Large)	32.00
PMRP	Hide Roll Pillow - 9" (L) x 17" (W) x 6" (D)	39.40
PKMT-ROPE	25' Twisted Manilla Rope - (17' for roll , 8' for antlers)	8.50



1 - 8 7 7 - 7 3 8 - 3 6 7 6
www.revolutiontaxidermysupply.com



Revolution Taxidermy Supply
1910 Saint Luke Church Rd.
Salisbury, NC 28146

- Toll Free Phone Service: 1-877-738-3676
- Fax Line: 704-279-8958
- E-Mail Address: RTS@mckenzietaxidermy.com
- Web Site Address: www.revolutiontaxidermysupply.com
- Office Hours: Operators on duty 8 a.m. to 8 p.m. ET Monday-Friday.
Tech Support: Live assistance 8 a.m. to 5:30 p.m. ET Monday-Friday.
Voice recorders in use at all other times.